

ISO 03 SANDWICH MANIFOLD

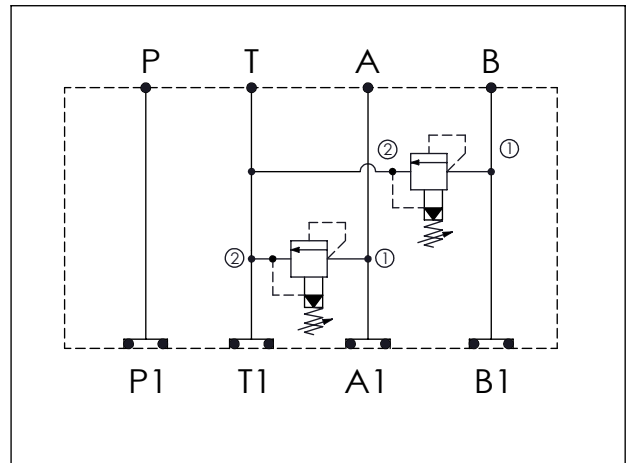
Ordering Code: **MH03RDT-X-Y-Z01**

Stack Height : 44.5mm

Technical drawing showing dimensions and port locations:

- Overall length: 205.9 mm
- Section lengths: 74.4 mm, 57.2 mm, 74.4 mm
- Stack Height: 44.5 mm
- Port diameter: $\varnothing 5.4^{+0.10}_{0.00}$
- Ports: P, T, A, B (top view); P1, T1, A1, B1 (bottom view)
- O-RING CODE NO. 4KAA012AA001

UNIT:mm



TECHNICAL DATA

Aluminum Body Pressure Rating: 210 bar

Ductile Iron

Body Pressure Rating: 350 bar

Rated flow: 40 l/min

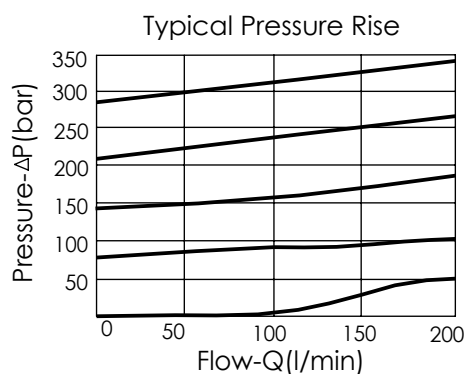
Cartridge Valve:

Refer to RP10A-X-Y-Z

* Refer to Winner Cartridge Valves Catalog.

Aluminum	0.45 kg(WITHOUT VALVES)
	0.8 kg(INCLUDE VALVES)
Ductile Iron	1.3 kg(WITHOUT VALVES)
	1.65 kg(INCLUDE VALVES)

* If you need the special specification. Please contact us.



X SELECTION FOR A PORT CONTROL

10A2 CAVITY ONLY(WITHOUT VALVE)

RPOA RP10A20AL(95LPM,7-210bar)

Please refer to the list price of cartridge program.

Y SELECTION FOR B PORT CONTROL

10A2 CAVITY ONLY(WITHOUT VALVE)

RPOA RP10A20AL (95LPM,7-210bar)

Please refer to the list price of cartridge program.

Z BODY MATERIAL

A HIGH-STRENGTH ALUMINUM

S DUCTILE IRON