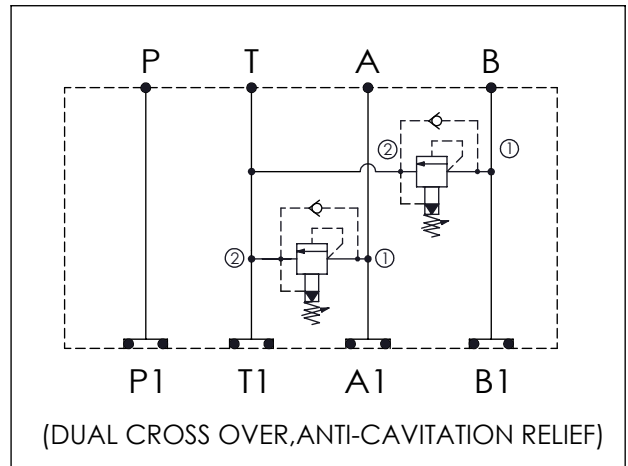


ISO 03 SANDWICH MANIFOLD

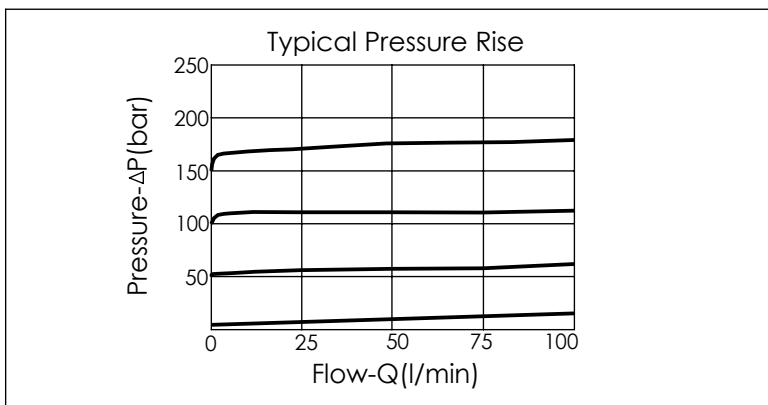
Ordering Code: **MH03RDT-X-Y-Z01**

Stack Height : 44.5mm

UNIT:mm



TECHNICAL DATA	
Aluminum Body Pressure Rating:	210 bar
Ductile Iron Body Pressure Rating:	350 bar
Rated flow:	40 l/min
Cartridge Valve:	Refer to RC10A-X-Y-Z
	* Refer to Winner Cartridge Valves Catalog.
Aluminum	0.45 kg(WITHOUT VALVES) 0.8 kg(INCLUDE VALVES)
Ductile Iron	1.3 kg(WITHOUT VALVES) 1.65 kg(INCLUDE VALVES)
* If you need the special specification. Please contact us.	



X	SELECTION FOR A PORT CONTROL
10A2	CAVITY ONLY(WITHOUT VALVE)
RCGA	RC10A2GAL (95LPM , 7-210bar) (0.3bar CHECK VALVE)
Please refer to the list price of cartridge program.	

Y	SELECTION FOR B PORT CONTROL
10A2	CAVITY ONLY(WITHOUT VALVE)
RCGA	RC10A2GAL (95LPM , 7-210bar) (0.3bar CHECK VALVE)
Please refer to the list price of cartridge program.	

Z	BODY MATERIAL
A	HIGH-STRENGTH ALUMINUM
S	DUCTILE IRON