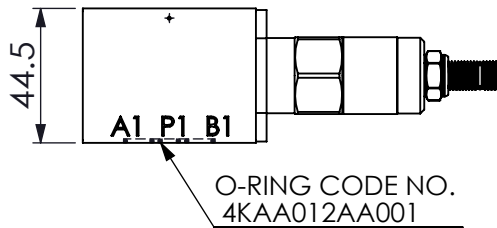
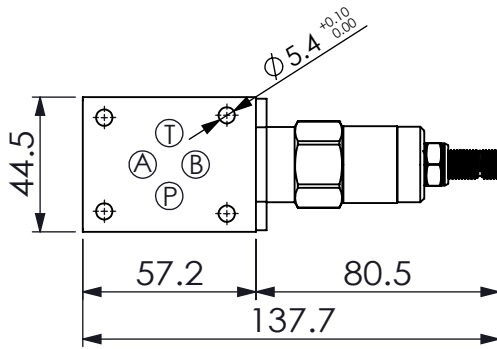
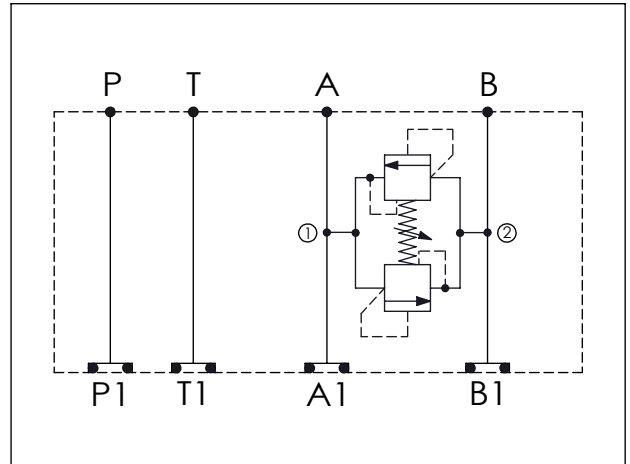
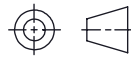


Ordering Code: MH03RDW-X-Y-Z01
Stack Height : 44.5mm



UNIT:mm



TECHNICAL DATA

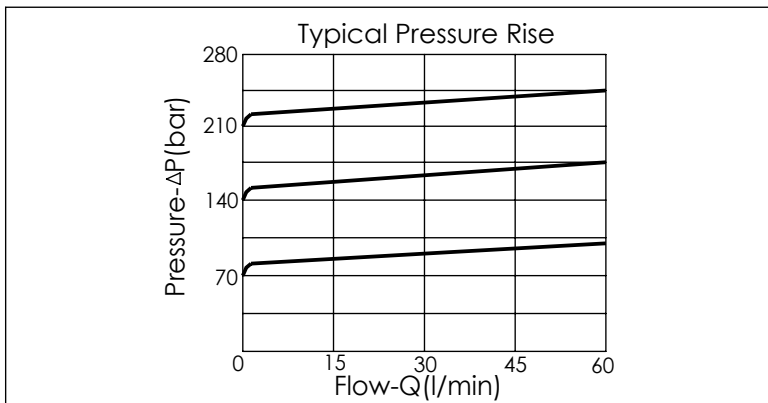
Aluminum Body Pressure Rating: 210 bar
 Ductile Iron
 Body Pressure Rating: 350 bar

Rated flow: 40 l/min

Cartridge Valve:
 Refer to CR10W-X-Y-Z
 * Refer to Winner Cartridge Valve Catalog.

Aluminum	0.27 kg(WITHOUT VALVE)
	0.51 kg(INCLUDE VALVE)

* If you need the special specification.
 Please contact us.



X	SELECTION FOR A PORT CONTROL
N	WITHOUT PORT

Y	SELECTION FOR B PORT CONTROL
10W2	CAVITY ONLY(WITHOUT VALVE)
CR0A	CR10W20AL (60LPM , 160-210bar)

Z	BODY MATERIAL
A	HIGH-STRENGTH ALUMINUM

Please refer to the list price of cartridge program.