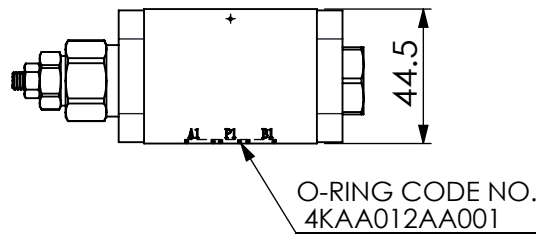
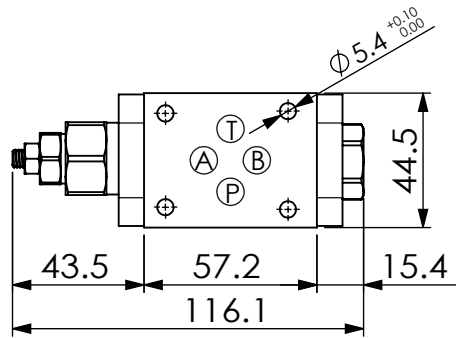
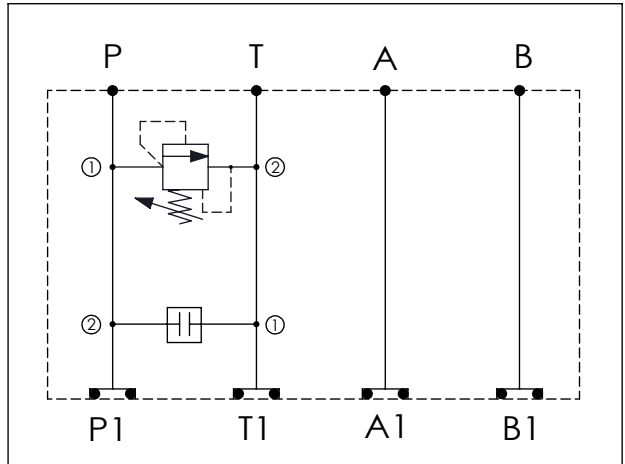
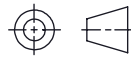


ISO 03 SANDWICH MANIFOLD

Ordering Code: MH03RPD-X-Y-Z 01
Stack Height : 44.5mm



UNIT:mm



TECHNICAL DATA

Aluminum Body Pressure Rating: 210 bar

Ductile Iron

Body Pressure Rating: 350 bar

Rated flow: 20 l/min

Cartridge Valve:

Refer to RD08W-X-Y-Z

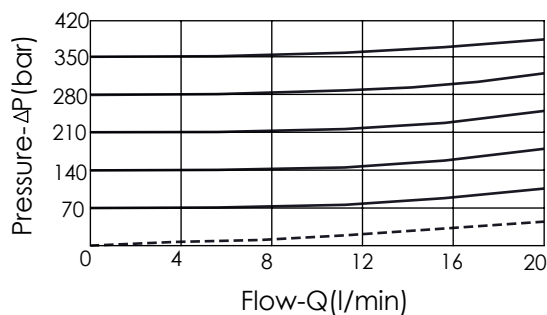
CP-08W-Y-Z

* Refer to Winner Cartridge Valves Catalog.

Aluminum	0.31 kg(WITHOUT VALVES) 0.52 kg(INCLUDE VALVES)
Ductile Iron	0.91 kg(WITHOUT VALVES) 1.12 kg(INCLUDE VALVES)

* If you need the special specification. Please contact us.

Typical Pressure Rise



X **SELECTION FOR RELIEF VALVE (PORT ① TO ②, NEAR "A" PORT SIDE)**

08W2 CAVITY ONLY (WITHOUT VALVE)

RDOA RD08W20AL (20LPM, 80-210bar)

Please refer to the list price of cartridge program.

Y **SELECTION FOR SOLENOID VALVES (PORT ② TO ①, NEAR "B" PORT SIDE)**

08W2 CAVITY ONLY (WITHOUT VALVE)

CP00 CP08W2H00NN(3/4"-16UNF-2B , All Ports Blocked)

Z **BODY MATERIAL**

A **HIGH-STRENGTH ALUMINUM**

S **DUCTILE IRON**

Please refer to the list price of cartridge program.