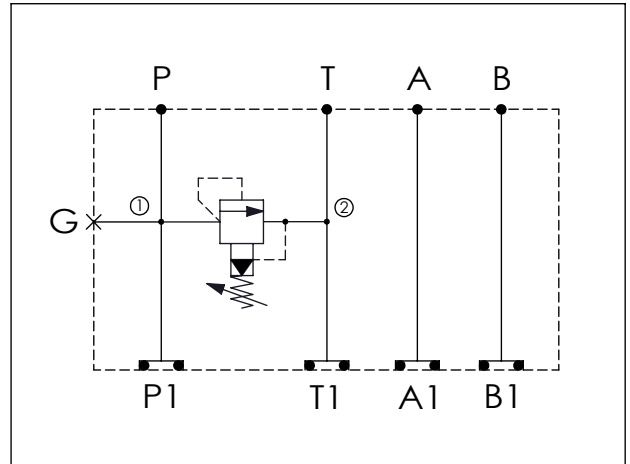
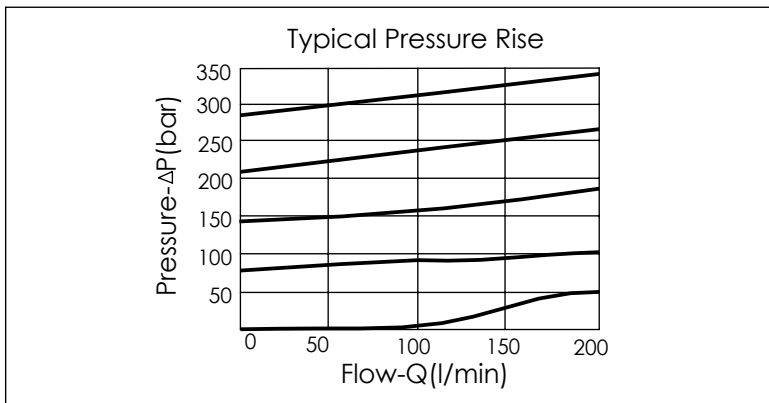


Ordering Code:	MH03RPH-X-Y-Z01
Stack Height :	44.5mm

UNIT:mm



TECHNICAL DATA	
Aluminum Body Pressure Rating:	210 bar
Ductile Iron Body Pressure Rating:	350 bar
Rated flow:	40 l/min
Cartridge Valve: Refer to RP10A-X-Y-Z	
* Refer to Winner Cartridge Valve Catalog.	
Aluminum	0.28 kg(WITHOUT VALVE) 0.43 kg(INCLUDE VALVE)
Ductile Iron	0.8 kg(WITHOUT VALVE) 0.95 kg(INCLUDE VALVE)
* If you need the special specification. Please contact us.	



X	SELECTION FOR P PORT CONTROL
10A2	CAVITY ONLY(WITHOUT VALVE)
RPOA	RP10A20AL(95LPM,7-210bar)
Please refer to the list price of cartridge program.	

Y	SELECTION FOR G PORT
G02	G 1/4"(Metric)
N02	NPT 1/4"(U.S. Units)

Z	BODY MATERIAL
A	HIGH-STRENGTH ALUMINUM
S	DUCTILE IRON