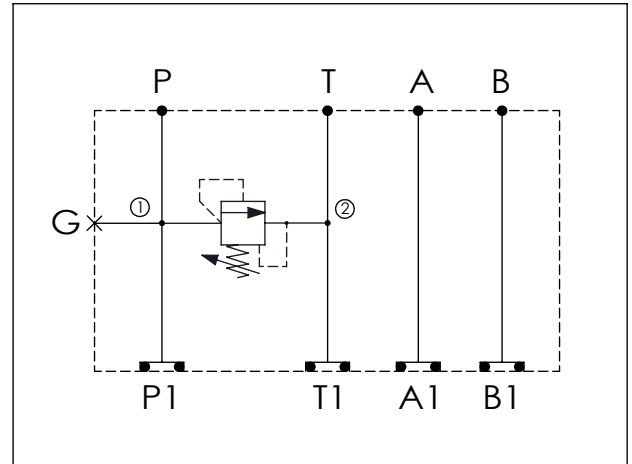


Ordering Code: **MH03RPH-X-Y-Z01**

Stack Height : 44.5mm

UNIT:mm



TECHNICAL DATA

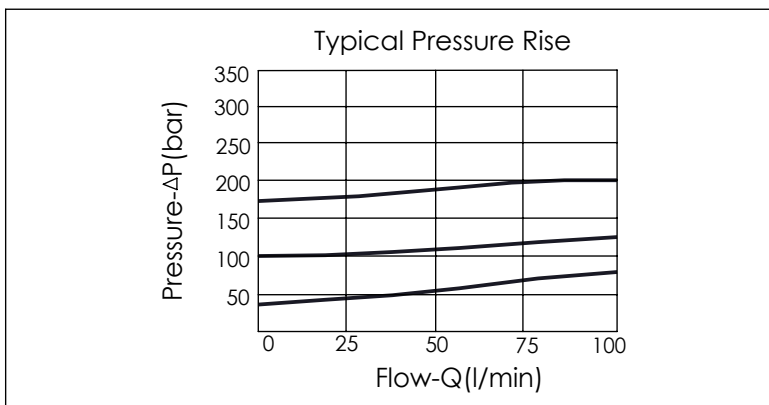
Aluminum Body Pressure Rating: 210 bar
 Ductile Iron
 Body Pressure Rating: 350 bar

Rated flow: 40 l/min

Cartridge Valve:
 Refer to RD10A-X-Y-Z
 * Refer to Winner Cartridge Valve Catalog.

Aluminum	0.28 kg(WITHOUT VALVE) 0.45 kg(INCLUDE VALVE)
Ductile Iron	0.8 kg(WITHOUT VALVE) 1.0 kg(INCLUDE VALVE)

* If you need the special specification.
 Please contact us.



X	SELECTION FOR P PORT CONTROL
10A2	CAVITY ONLY(WITHOUT VALVE)
RD5A	RD10A25AL(95LPM,35-210bar)
Please refer to the list price of cartridge program.	

Y	SELECTION FOR G PORT
G02	G 1/4"(Metric)
N02	NPT 1/4"(U.S. Units)

Z	BODY MATERIAL
A	HIGH-STRENGTH ALUMINUM
S	DUCTILE IRON