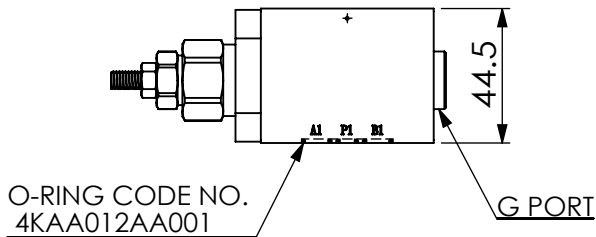
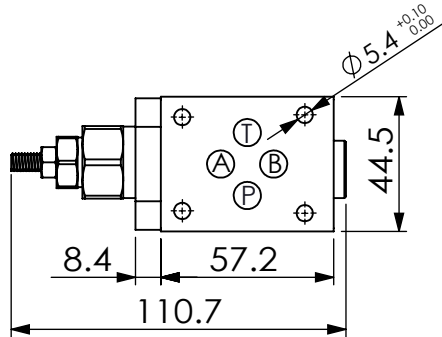
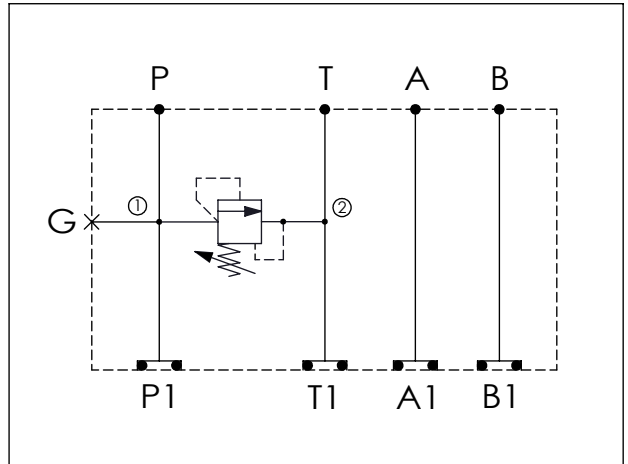


ISO 03 SANDWICH MANIFOLD

Ordering Code: MH03RPW-X-Y-Z 01
Stack Height : 44.5mm



UNIT:mm



TECHNICAL DATA

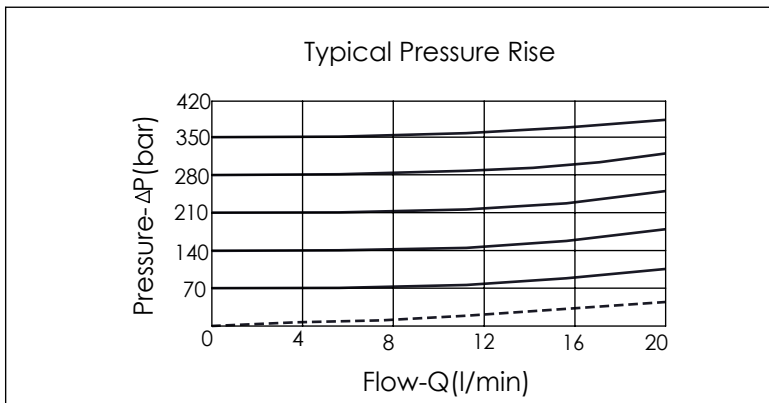
Aluminum Body Pressure Rating: 210 bar
 Ductile Iron
 Body Pressure Rating: 350 bar

Rated flow: 20 l/min

Cartridge Valve:
 Refer to RD08W-X-Y-Z
 * Refer to Winner Cartridge Valve Catalog.

Aluminum	0.3 kg(WITHOUT VALVE)
	0.43 kg(INCLUDE VALVE)
Ductile Iron	0.85 kg(WITHOUT VALVE)
	0.98 kg(INCLUDE VALVE)

* If you need the special specification.
 Please contact us.



X	SELECTION FOR P PORT CONTROL
08W2	CAVITY ONLY(WITHOUT VALVE)
RD0A	RD08W20AL(20LPM,80~210bar)
Please refer to the list price of cartridge program.	

Y	SELECTION FOR G PORT
G02	G 1/4"(Metric)
N02	NPT 1/4"(U.S. Units)

Z	BODY MATERIAL
A	HIGH-STRENGTH ALUMINUM
S	DUCTILE IRON