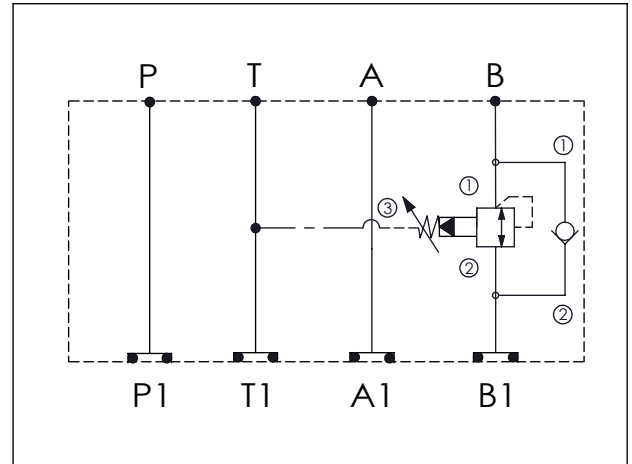


Ordering Code: **MH03SBI-X-Y-Z 01**

Stack Height : 44.5mm

UNIT:mm



TECHNICAL DATA

Aluminum Body Pressure Rating: 210 bar

Ductile Iron

Body Pressure Rating: 350 bar

Rated flow: 40 l/min

Cartridge Valve:

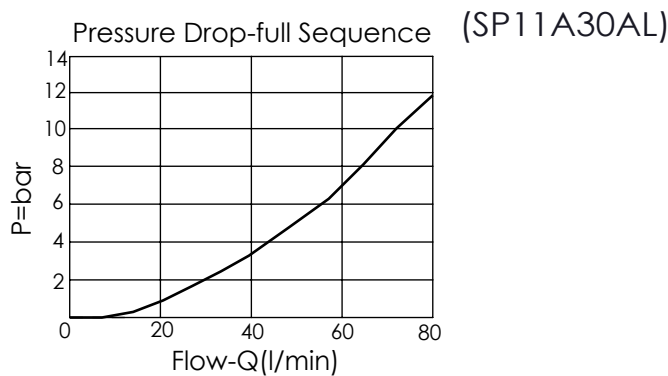
Refer to CV13A-X-Y-Z

SP11A-X-Y-Z

* Refer to Winner Cartridge Valves Catalog.

Aluminum	0.46 kg(WITHOUT VALVES)
	0.71 kg(INCLUDE VALVES)

* If you need the special specification. Please contact us.



X	SELECTION FOR CHECK VALVE
13A2	CAVITY ONLY(WITHOUT VALVE)
CV2120	CV13A2120N (60LPM , 2.0bar)
Please refer to the list price of cartridge program.	

Y	SELECTION FOR B PORT CONTROL
11A3	CAVITY ONLY(WITHOUT VALVE)
SPOA	SP11A30AL (60LPM , 7-210bar)
Please refer to the list price of cartridge program.	

Z	BODY MATERIAL
A	HIGH-STRENGTH ALUMINUM