

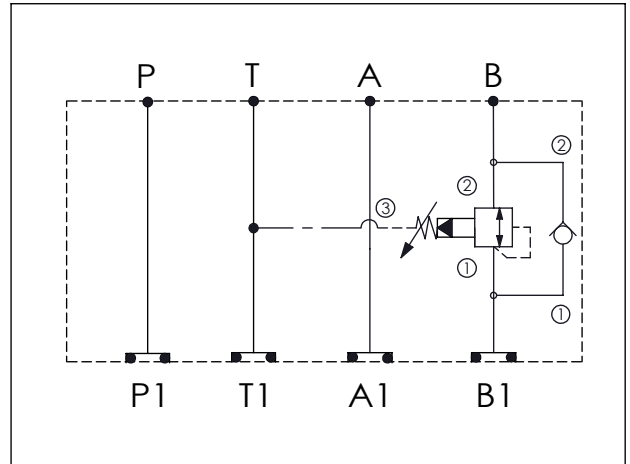
Ordering Code: **MH03SBO-X-Y-Z01**

Stack Height : 44.5mm

Technical drawing showing dimensions and port locations:

- Overall length: 176.3 mm
- Port P to T distance: 40.7 mm
- Port T to A distance: 57.2 mm
- Port A to B distance: 78.4 mm
- Stack height: 44.5 mm
- Port diameter: $\phi 5.4^{+0.10}_{0.00}$
- Ports labeled: P, T, A, B (top view) and P1, T1, A1, B1 (bottom view)
- O-RING CODE NO. 4KAA012AA001

UNIT:mm



TECHNICAL DATA

Aluminum Body Pressure Rating: 210 bar

Ductile Iron

Body Pressure Rating: 350 bar

Rated flow: 40 l/min

Cartridge Valve:

Refer to CV13A-X-Y-Z

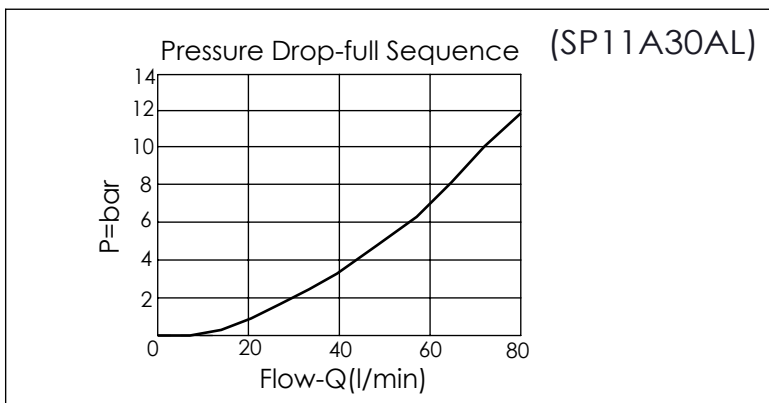
SP11A-X-Y-Z

* Refer to Winner Cartridge Valves Catalog.

Aluminum	0.46 kg(WITHOUT VALVES) 0.71 kg(INCLUDE VALVES)
----------	--

Ductile Iron	1.33 kg(WITHOUT VALVES) 1.58 kg(INCLUDE VALVES)
--------------	--

* If you need the special specification. Please contact us.



X	SELECTION FOR CHECK VALVE
13A2	CAVITY ONLY(WITHOUT VALVE)
CV2120	CV13A2120N (60LPM , 2.0bar)
Please refer to the list price of cartridge program.	

Y	SELECTION FOR B PORT CONTROL
11A3	CAVITY ONLY(WITHOUT VALVE)
SPOA	SP11A30AL (60LPM , 7-210bar)
Please refer to the list price of cartridge program.	

Z	BODY MATERIAL
A	HIGH-STRENGTH ALUMINUM
S	DUCTILE IRON