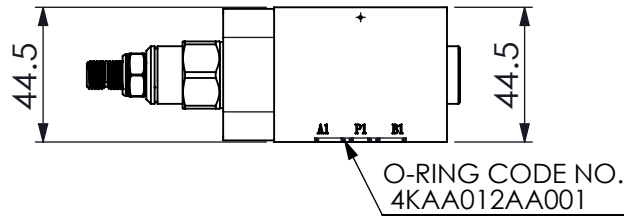
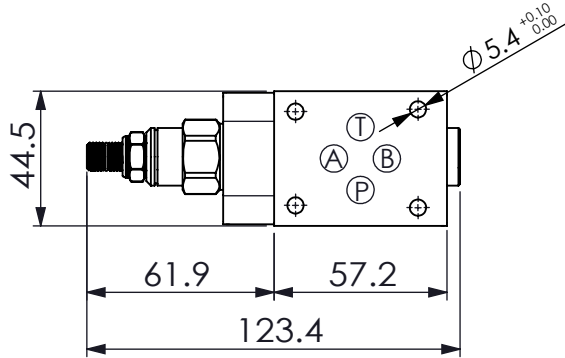
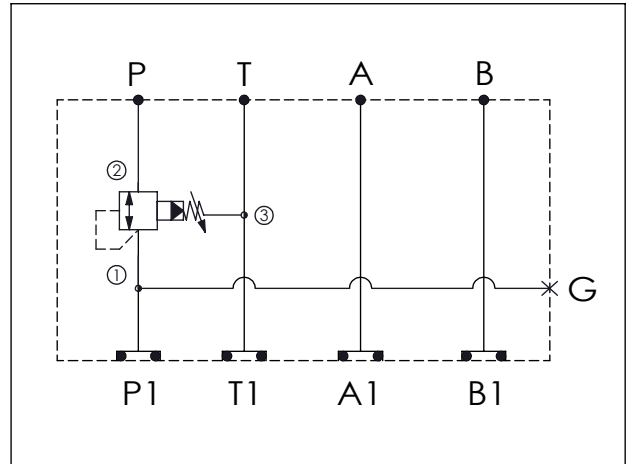


Ordering Code: <b>MH03PW-X-Y-Z01</b>
Stack Height : 44.5mm



UNIT:mm



### TECHNICAL DATA

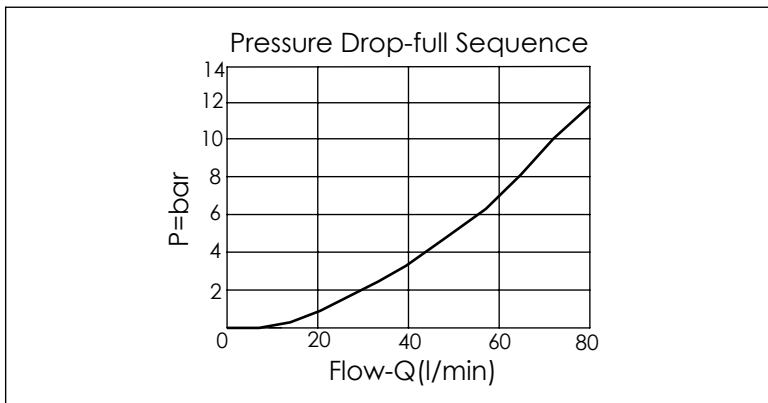
Aluminum Body Pressure Rating: 210 bar  
 Ductile Iron  
 Body Pressure Rating: 350 bar

Rated flow: 40 l/min

Cartridge Valve:  
 Refer to SP11A-X-Y-Z  
 \* Refer to Winner Cartridge Valve Catalog.

Aluminum	0.3 kg(WITHOUT VALVE)
	0.45 kg(INCLUDE VALVE)
DUCTILE IRON	0.9 kg(WITHOUT VALVE)
	1.05 kg(INCLUDE VALVE)

\* If you need the special specification.  
 Please contact us.



<b>X</b>	<b>SELECTION FOR P PORT CONTROL</b>
<b>11A3</b>	CAVITY ONLY(WITHOUT VALVE)
<b>SPOA</b>	SP11A30AL (60LPM,7-210bar)
Please refer to the list price of cartridge program.	

<b>Y</b>	<b>SELECTION FOR G PORT</b>
<b>G02</b>	G 1/4"(Metric)
<b>N02</b>	NPT 1/4"(U.S. Units)

<b>Z</b>	<b>BODY MATERIAL</b>
<b>A</b>	<b>HIGH-STRENGTH ALUMINUM</b>
<b>S</b>	<b>DUCTILE IRON</b>