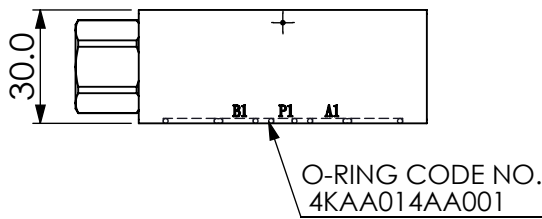
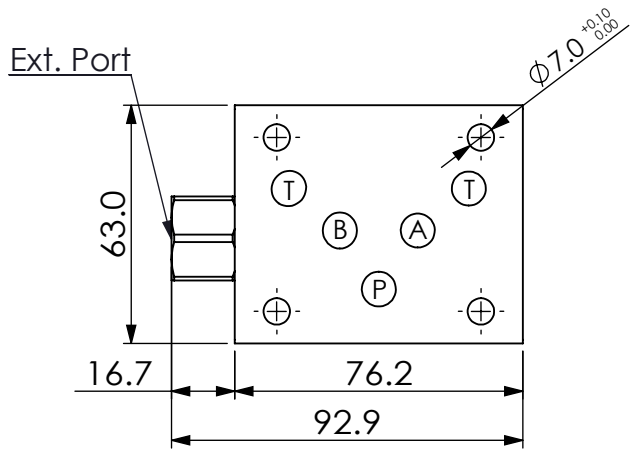
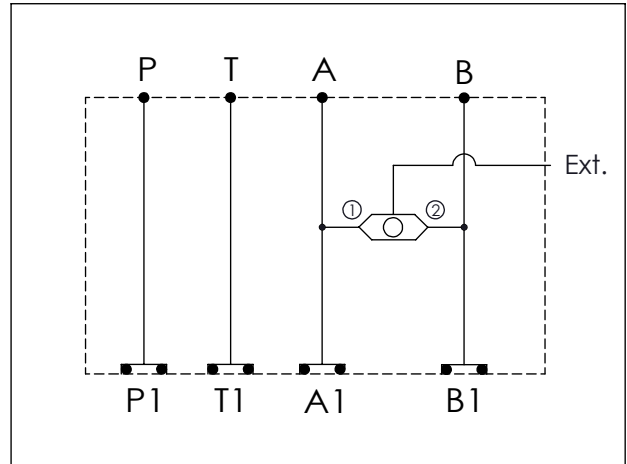


Ordering Code: **MH05BBB-X-Y-Z04**

Stack Height : 30.0mm



UNIT:mm



TECHNICAL DATA

Aluminum Body Pressure Rating: 210 bar
 Ductile Iron Body Pressure Rating: 350 bar

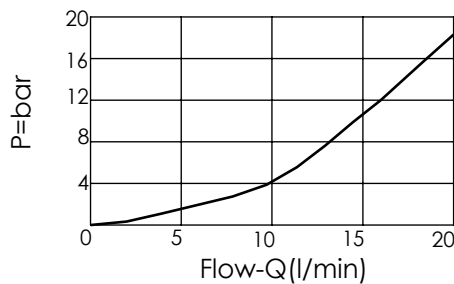
Rated flow: 80 l/min

Cartridge Valve:
 Refer to LS13A-X-Y-Z
 * Refer to Winner Cartridge Valves Catalog.

Aluminum	0.32 kg(WITHOUT VALVE)
	0.42 kg(INCLUDE VALVE)
Ductile Iron	0.92 kg(WITHOUT VALVE)
	1.02 kg(INCLUDE VALVE)

* If you need the special specification. Please contact us.

Typical Pressure Drop



X SELECTION FOR A PORT CONTROL

N WITHOUT PORT

Y SELECTION FOR B PORT CONTROL

13A2 CAVITY ONLY(WITHOUT VALVE)
LS0NG02 LS13A20NG02 (External G1/4" Port)

Z BODY MATERIAL

A HIGH-STRENGTH ALUMINUM
S DUCTILE IRON

Please refer to the list price of cartridge program.