

## ISO 05 SANDWICH MANIFOLD

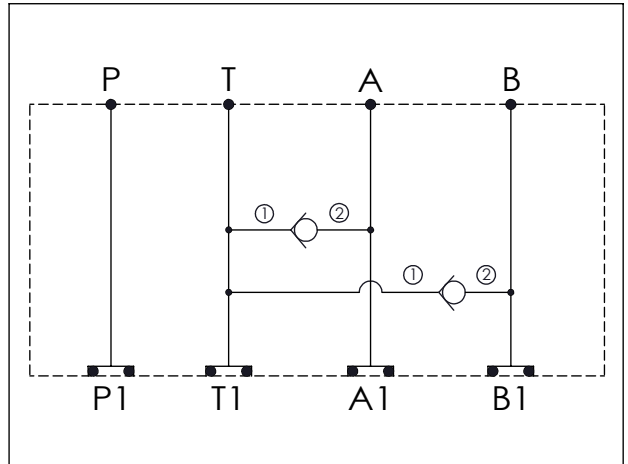
Ordering Code: **MH05BDT-X-Y-Z01**

Stack Height : 49.5mm

Technical drawing showing dimensions and port labels:

- Overall length: 149.6 mm
- Port spacing: 36.7 mm (left), 76.2 mm (middle), 36.7 mm (right)
- Height: 63.0 mm
- Port diameter:  $\phi 7.0^{+0.10}_{0.00}$
- Stack height: 49.5 mm
- Ports: P, T, A, B (top view); P1, T1, A1, B1 (bottom view)
- O-RING CODE NO. 4KAA014AA001

UNIT:mm



### TECHNICAL DATA

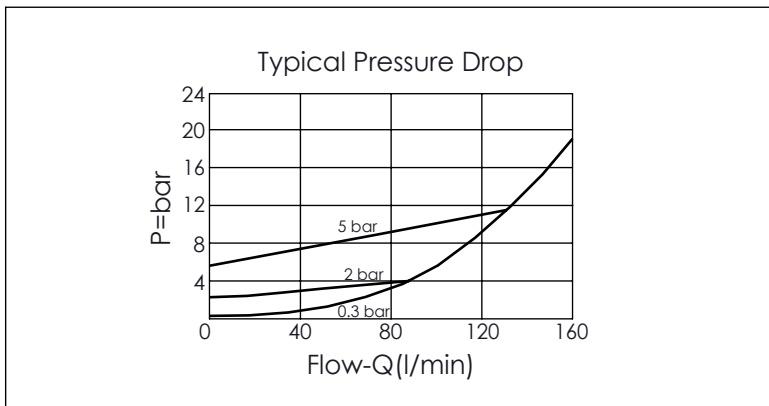
Aluminum Body Pressure Rating: 210 bar  
 Ductile Iron Body Pressure Rating: 350 bar

Rated flow: 80 l/min

Cartridge Valve:  
 Refer to CV5A-X-Y-Z  
 \* Refer to Winner Cartridge Valves Catalog.

Aluminum	0.76 kg(WITHOUT VALVES) 1.16 kg(INCLUDE VALVES)
Ductile Iron	2.21 kg(WITHOUT VALVES) 2.61 kg(INCLUDE VALVES)

\* If you need the special specification. Please contact us.



<b>X</b>	<b>SELECTION FOR A PORT CONTROL</b>
<b>5A2</b>	CAVITY ONLY(WITHOUT VALVE)
<b>CV2003</b>	CV5A2003N (160 LPM , 0.3bar)
Please refer to the list price of cartridge program.	

<b>Y</b>	<b>SELECTION FOR B PORT CONTROL</b>
<b>5A2</b>	CAVITY ONLY(WITHOUT VALVE)
<b>CV2003</b>	CV5A2003N (160 LPM , 0.3bar)
Please refer to the list price of cartridge program.	

<b>Z</b>	<b>BODY MATERIAL</b>
<b>A</b>	HIGH-STRENGTH ALUMINUM
<b>S</b>	DUCTILE IRON