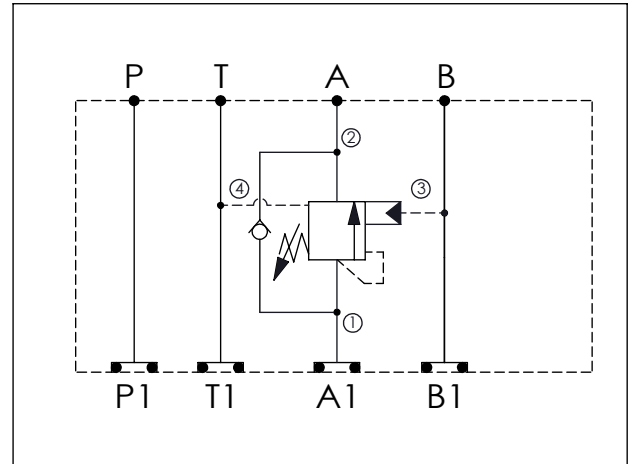


Ordering Code: **MH05CAT-X-Y-Z 03**

Stack Height : 63.0mm

UNIT:mm



TECHNICAL DATA

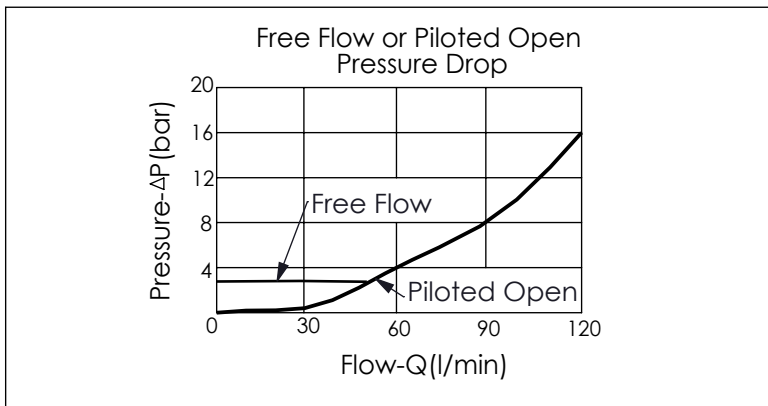
Aluminum Body Pressure Rating: 210 bar
 Ductile Iron Body Pressure Rating: 350 bar

Rated flow: 80 l/min

Cartridge Valve:
 Refer to CW22A-X-Y-Z
 * Refer to Winner Cartridge Valve Catalog.

Aluminum	1.1 kg(WITHOUT VALVE)
	1.46 kg(INCLUDE VALVE)
Ductile Iron	3.1 kg(WITHOUT VALVE)
	3.46 kg(INCLUDE VALVE)

* If you need the special specification. Please contact us.



X	SELECTION FOR A PORT CONTROL
22A4	CAVITY ONLY(WITHOUT VALVE)
CWAI	CW22A4AIL (1:1 , 105bar)
CWBF	CW22A4BFL (2:1 , 175bar)
CWCH	CW22A4CHL (3:1 , 280bar)
CWEF	CW22A4EFL (5:1 , 175bar)

Please refer to the list price of cartridge program.

Y	SELECTION FOR G PORT
N	WITHOUT PORT

Z	BODY MATERIAL
A	HIGH-STRENGTH ALUMINUM
S	DUCTILE IRON