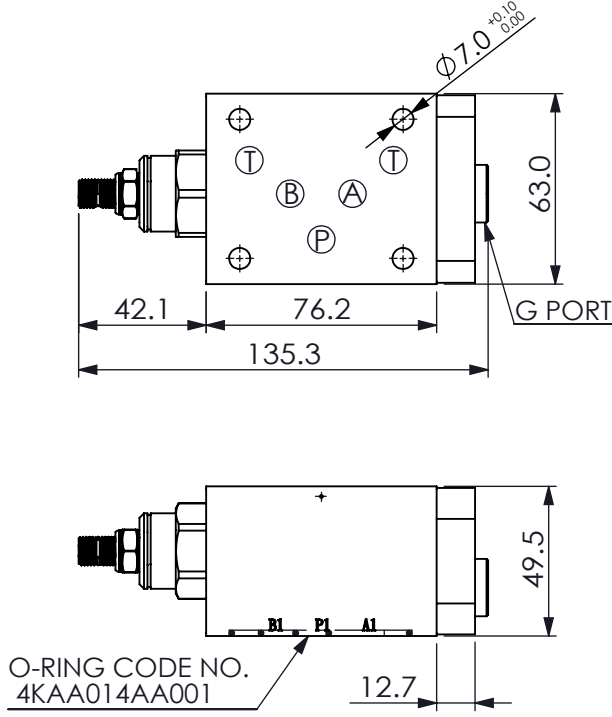
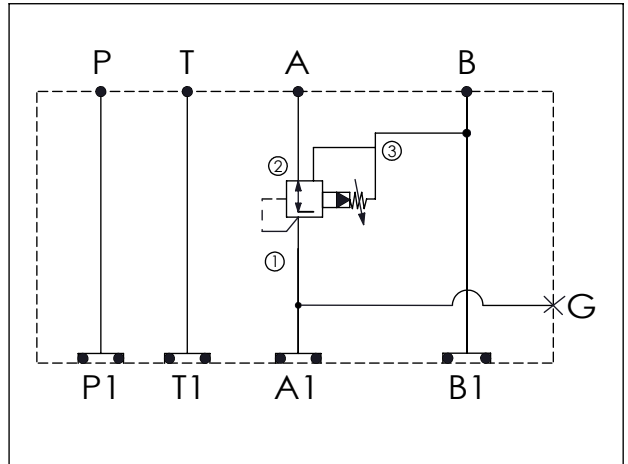


Ordering Code: **MH05CAW-X-Y-Z 01**
 Stack Height : 49.5mm



UNIT:mm



TECHNICAL DATA

Aluminum Body Pressure Rating: 210 bar
 Ductile Iron Body Pressure Rating: 350 bar

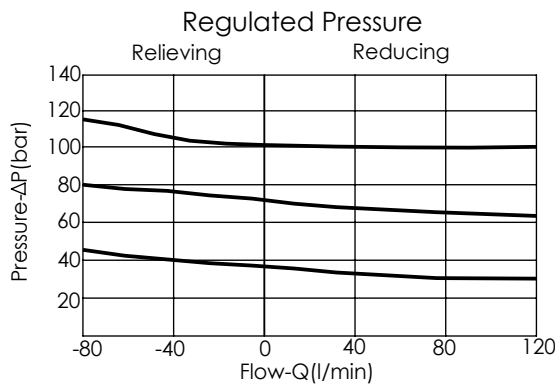
Rated flow: 80 l/min

Cartridge Valve:
 Refer to PP2A-X-Y-Z

* Refer to Winner Cartridge Valve Catalog.

Aluminum	0.65 kg(WITHOUT VALVE) 0.92 kg(INCLUDE VALVE)
Ductile Iron	1.65 kg(WITHOUT VALVE) 1.92 kg(INCLUDE VALVE)

* If you need the special specification.
 Please contact us.



X

SELECTION FOR G PORT

G02	G 1/4"(Metric)
N02	NPT 1/4"(U.S. Units)

Y

SELECTION FOR B PORT CONTROL

2A3	CAVITY ONLY(WITHOUT VALVE)
PP0A	PP2A30AL(80LPM,7.0~210bar) (Pilot Operated Reducing/Relieving)

Z

BODY MATERIAL

A	HIGH-STRENGTH ALUMINUM
S	DUCTILE IRON(Phosphatizing)
E	DUCTILE IRON(Zinc-Nickel plating)