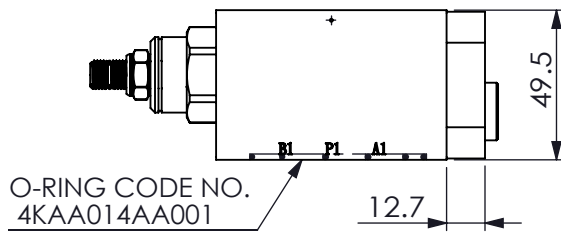
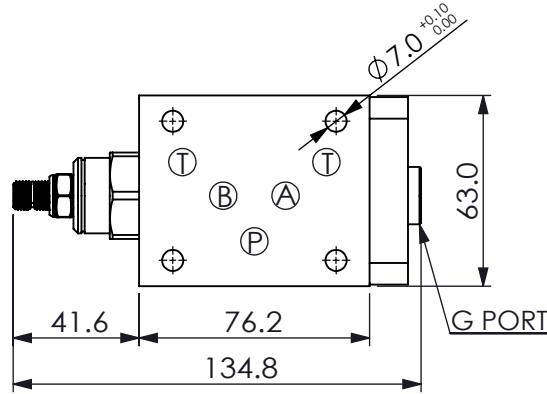
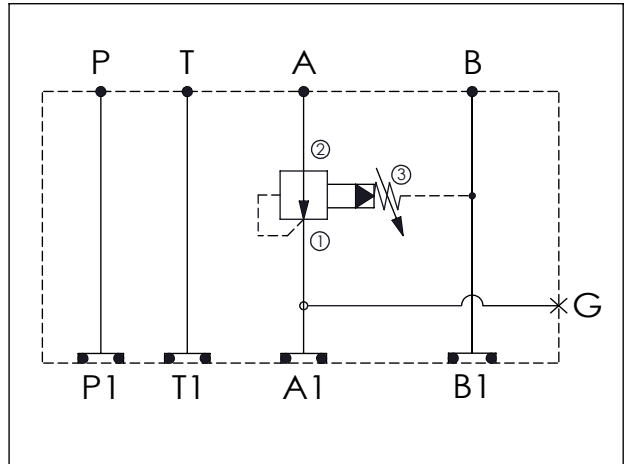


ISO 05 SANDWICH MANIFOLD

Ordering Code: **MH05CAW-X-Y-Z 01**
 Stack Height : 49.5mm



UNIT:mm



TECHNICAL DATA

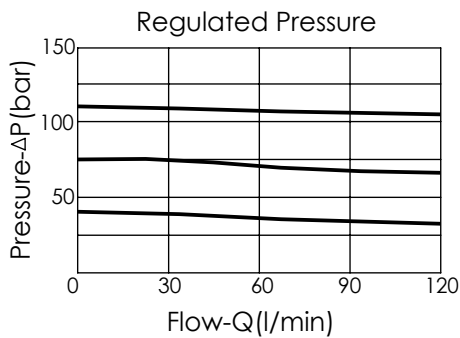
Aluminum Body Pressure Rating: 210 bar
 Ductile Iron Body Pressure Rating: 350 bar

Rated flow: 80 l/min

Cartridge Valve:
 Refer to PB2A-X-Y-Z
 * Refer to Winner Cartridge Valve Catalog.

| | |
|--------------|--|
| Aluminum | 0.65 kg(WITHOUT VALVE) 0.95 kg(INCLUDE VALVE) |
| Ductile Iron | 1.65 kg(WITHOUT VALVE) 1.95 kg(INCLUDE VALVE) |

* If you need the special specification. Please contact us.



X SELECTION FOR G PORT

| | |
|------------|----------------------|
| G02 | G 1/4"(Metric) |
| N02 | NPT 1/4"(U.S. Units) |

Y SELECTION FOR B PORT CONTROL

| | |
|-------------|----------------------------|
| 2A3 | CAVITY ONLY(WITHOUT VALVE) |
| PB0A | PB2A30AL (80LPM ,7-210bar) |

Z BODY MATERIAL

| | |
|----------|-----------------------------------|
| A | HIGH-STRENGTH ALUMINUM |
| S | DUCTILE IRON(Phosphatizing) |
| E | DUCTILE IRON(Zinc-Nickel plating) |