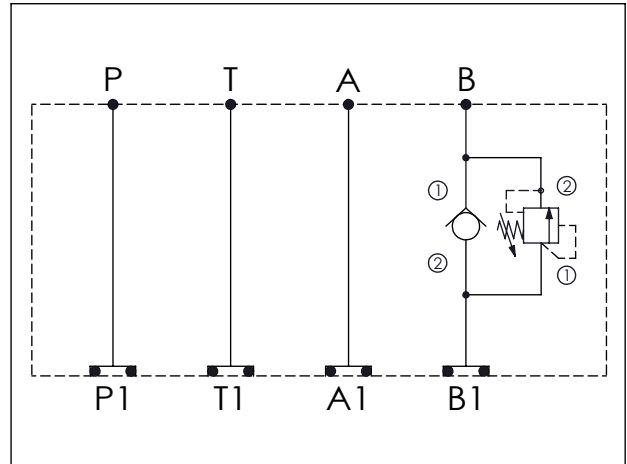


## ISO 05 SANDWICH MANIFOLD

Ordering Code: **MH05CBC-X-Y-Z03**

Stack Height : 63.0mm

UNIT:mm



### TECHNICAL DATA

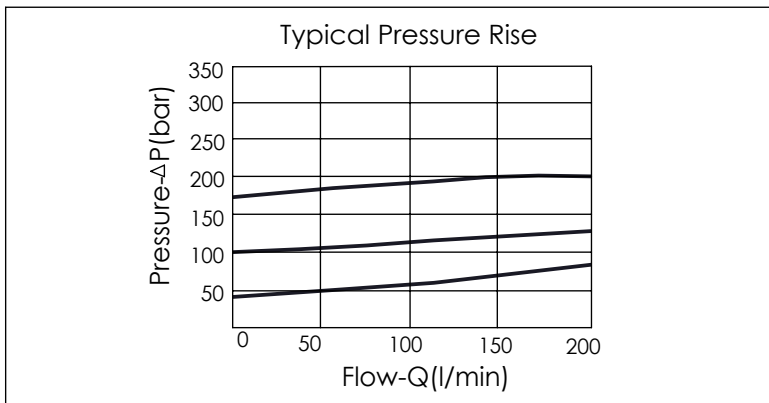
Aluminum Body Pressure Rating: 210 bar  
 Ductile Iron Body Pressure Rating: 350 bar  
 Rated flow: 80 l/min

Cartridge Valve:  
 Refer to CV5A-X-Y-Z  
 RD3A-X-Y-Z

\* Refer to Winner Cartridge Valves Catalog.

Aluminum	1.09 kg(WITHOUT VALVES) 1.58 kg(INCLUDE VALVES)
Ductile Iron	3.18 kg(WITHOUT VALVES) 3.67 kg(INCLUDE VALVES)

\* If you need the special specification. Please contact us.



<b>X</b>	<b>SELECTION FOR A PORT CONTROL</b>
<b>5A2</b>	CAVITY ONLY(WITHOUT VALVE)
<b>CV2003</b>	CV5A2003N (160 LPM , 0.3bar)
Please refer to the list price of cartridge program.	

<b>Y</b>	<b>SELECTION FOR B PORT CONTROL</b>
<b>3A2</b>	CAVITY ONLY(WITHOUT VALVE)
<b>RD5A</b>	RD3A25AL (200 LPM , 35-210bar)
Please refer to the list price of cartridge program.	

<b>Z</b>	<b>BODY MATERIAL</b>
<b>A</b>	HIGH-STRENGTH ALUMINUM
<b>S</b>	DUCTILE IRON