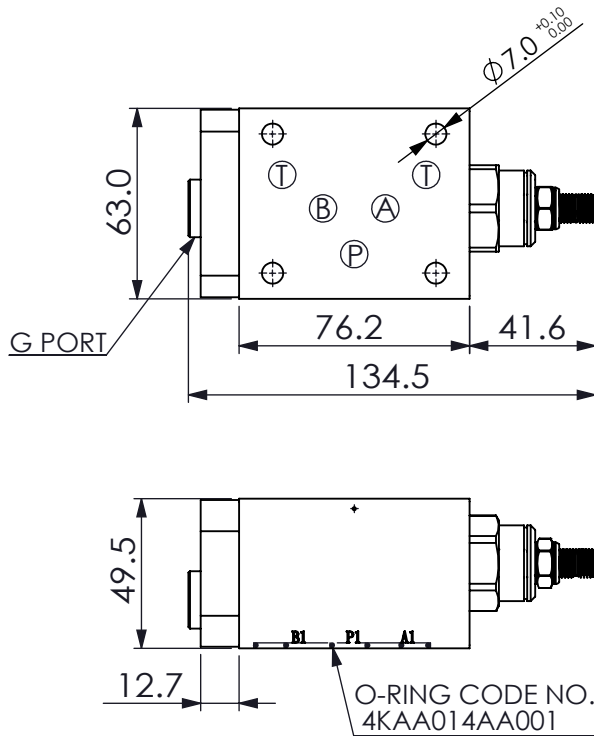
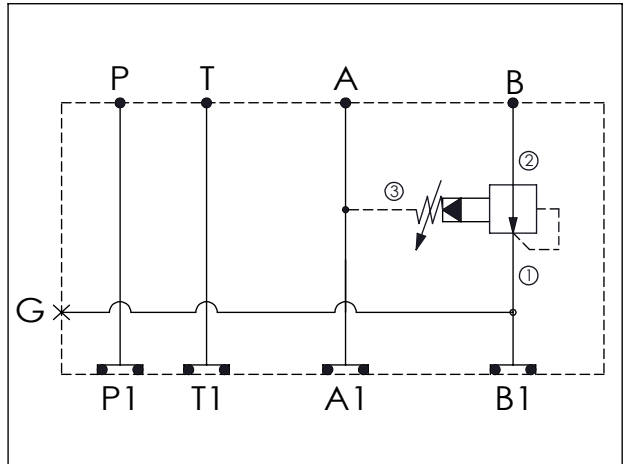
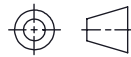


ISO 05 SANDWICH MANIFOLD

Ordering Code: **MH05CBW-X-Y-Z 01**
 Stack Height : 49.5mm



UNIT:mm



TECHNICAL DATA

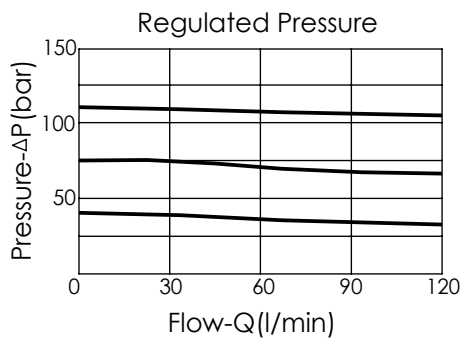
Aluminum Body Pressure Rating: 210 bar
 Ductile Iron
 Body Pressure Rating: 350 bar

Rated flow: 80 l/min

Cartridge Valve:
 Refer to PB2A-X-Y-Z
 * Refer to Winner Cartridge Valve Catalog.

Aluminum	0.65 kg(WITHOUT VALVE)
	0.95 kg(INCLUDE VALVE)
Ductile Iron	1.65 kg(WITHOUT VALVE)
	1.95 kg(INCLUDE VALVE)

* If you need the special specification.
 Please contact us.



X SELECTION FOR A PORT CONTROL

2A3	CAVITY ONLY(WITHOUT VALVE)
PB0A	PB2A30AL (80LPM ,7-210bar)

Please refer to the list price of cartridge program.

Y SELECTION FOR G PORT

G02	G 1/4"(Metric)	
N02	NPT 1/4"(U.S. Units)	

Z BODY MATERIAL

A	HIGH-STRENGTH ALUMINUM	
S	DUCTILE IRON(Phosphatizing)	
E	DUCTILE IRON(Zinc-Nickel plating)	