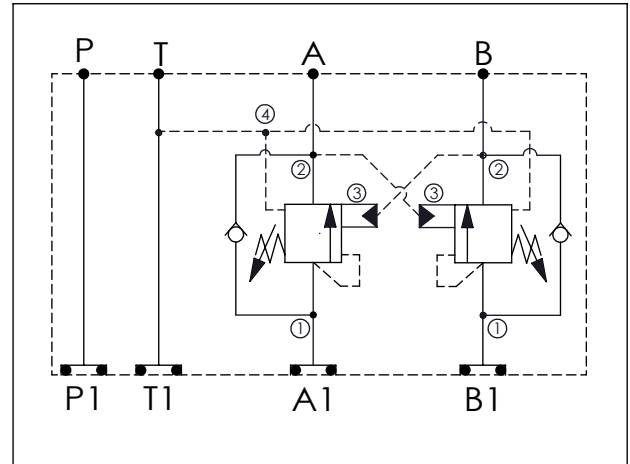


Ordering Code: **MH05CDT-X-Y-Z03**

Stack Height : 63.0mm

O-RING CODE NO.  
4KAA014AA001

UNIT:mm



### TECHNICAL DATA

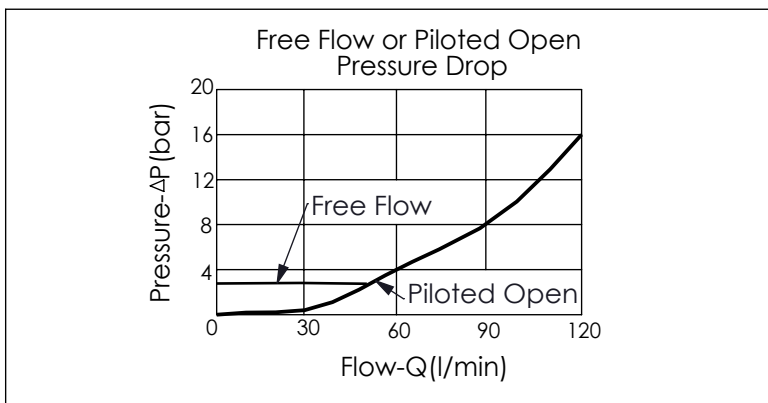
Aluminum Body Pressure Rating: 210 bar  
Ductile Iron  
Body Pressure Rating: 350 bar

Rated flow: 80 l/min

Cartridge Valve:  
Refer to CW22A-X-Y-Z  
\* Refer to Winner Cartridge Valve Catalog.

Aluminum	1.45 kg(WITHOUT VALVES) 2.2 kg(INCLUDE VALVES)
Ductile Iron	4.15 kg(WITHOUT VALVES) 4.9 kg(INCLUDE VALVES)

\* If you need the special specification.  
Please contact us.



X	SELECTION FOR A PORT CONTROL
<b>22A4</b>	CAVITY ONLY(WITHOUT VALVE)
<b>CWAI</b>	CW22A4AIL (1:1 , 105bar)
<b>CWBF</b>	CW22A4BFL (2:1 , 175bar)
<b>CWCH</b>	CW22A4CHL (3:1 , 280bar)
<b>CWEF</b>	CW22A4EFL (5:1 , 175bar)

Please refer to the list price of cartridge program.

Y	SELECTION FOR B PORT CONTROL
<b>22A4</b>	CAVITY ONLY(WITHOUT VALVE)
<b>CWAI</b>	CW22A4AIL (1:1 , 105bar)
<b>CWBF</b>	CW22A4BFL (2:1 , 175bar)
<b>CWCH</b>	CW22A4CHL (3:1 , 280bar)
<b>CWEF</b>	CW22A4EFL (5:1 , 175bar)

Please refer to the list price of cartridge program.

Z	BODY MATERIAL
<b>A</b>	HIGH-STRENGTH ALUMINUM
<b>S</b>	DUCTILE IRON