

ISO 05 SANDWICH MANIFOLD

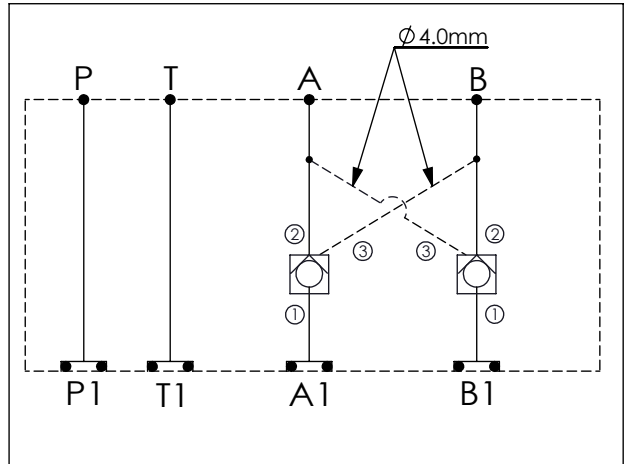
Ordering Code: **MH05CDW-X-Y-Z 01**

Stack Height : 49.5mm

Technical drawing showing dimensions and port locations:

- Top View Dimensions: 43.5, 76.2, 43.5, 163.2, 63.0
- Side View Dimension: 49.5
- Port Locations: P, T, A, B (top); P1, T1, A1, B1 (bottom)
- Dimension: $\phi 7.0^{+0.10}_{0.00}$
- O-RING CODE NO. 4KAA014AA001

UNIT:mm



TECHNICAL DATA

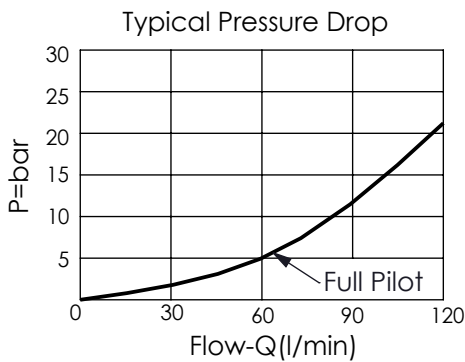
Aluminum Body Pressure Rating: 210 bar
 Ductile Iron Body Pressure Rating: 350 bar

Rated flow: 80 l/min

Cartridge Valve:
 Refer to CO2A-X-Y-Z
 * Refer to Winner Cartridge Valve Catalog.

Aluminum	0.85 kg(WITHOUT VALVES) 1.35 kg(INCLUDE VALVES)
Ductile Iron	2.4 kg(WITHOUT VALVES) 2.9 kg(INCLUDE VALVES)

* If you need the special specification. Please contact us.



X SELECTION FOR A PORT CONTROL

2A3	CAVITY ONLY(WITHOUT VALVE)
CO20	CO2A3020N (120LPM,2.0bar)
CO03	CO2A3003N (120LPM,0.3bar)

FAST ACTING

CO20N2	CO2A3020N-2 (120LPM,2.0bar)
CO03N2	CO2A3003N-2 (120LPM,0.3bar)

Please refer to the list price of cartridge program.

Y SELECTION FOR B PORT CONTROL

2A3	CAVITY ONLY(WITHOUT VALVE)
CO20	CO2A3020N (120LPM,2.0bar)
CO03	CO2A3003N (120LPM,0.3bar)

FAST ACTING

CO20N2	CO2A3020N-2 (120LPM,2.0bar)
CO03N2	CO2A3003N-2 (120LPM,0.3bar)

Please refer to the list price of cartridge program.

Z BODY MATERIAL

A	HIGH-STRENGTH ALUMINUM
S	DUCTILE IRON(Phosphatizing)
E	DUCTILE IRON(Zinc-Nickel plating)