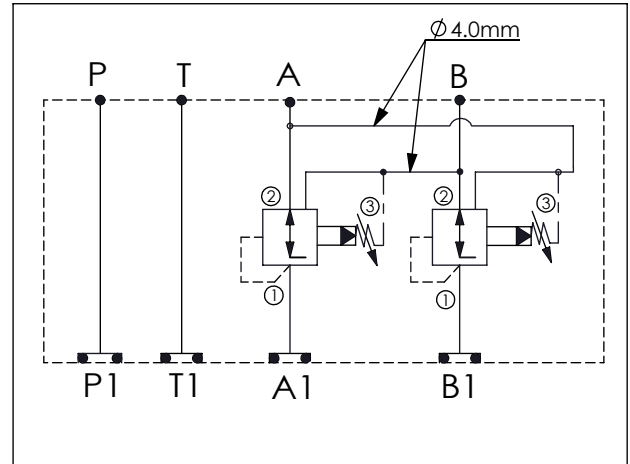


Ordering Code: **MH05CDW-X-Y-Z 01**

Stack Height : 49.5mm

UNIT:mm



TECHNICAL DATA

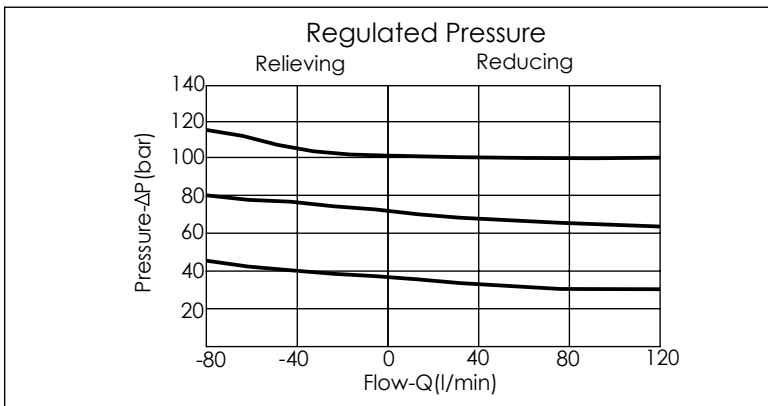
Aluminum Body Pressure Rating: 210 bar
 Ductile Iron Body Pressure Rating: 350 bar

Rated flow: 80 l/min

Cartridge Valve:
 Refer to PP2A-X-Y-Z
 * Refer to Winner Cartridge Valves Catalog.

Aluminum	0.85 kg(WITHOUT VALVES) 1.4 kg(INCLUDE VALVES)
Ductile Iron	2.4 kg(WITHOUT VALVES) 2.95 kg(INCLUDE VALVES)

* If you need the special specification. Please contact us.



X	SELECTION FOR A PORT CONTROL
2A3	CAVITY ONLY(WITHOUT VALVE)
PP0A	PP2A30AL(80LPM,7.0~210bar) (Pilot Operated Reducing/Relieving)

Please refer to the list price of cartridge program.

Y	SELECTION FOR B PORT CONTROL
2A3	CAVITY ONLY(WITHOUT VALVE)
PP0A	PP2A30AL(80LPM,7.0~210bar) (Pilot Operated Reducing/Relieving)

Please refer to the list price of cartridge program.

Z	BODY MATERIAL
A	HIGH-STRENGTH ALUMINUM
S	DUCTILE IRON(Phosphatizing)
E	DUCTILE IRON(Zinc-Nickel plating)