

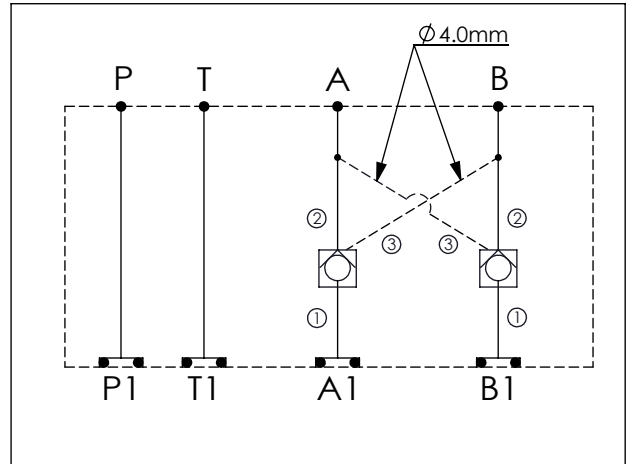
Ordering Code: **MH05CDW-X-Y-Z 21**

Stack Height : 49.5mm

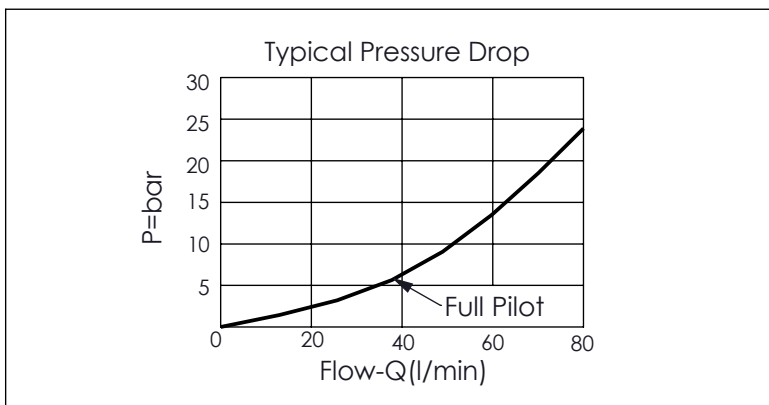
Technical drawing showing dimensions and port locations:

- Top View Dimensions: 38.7, 76.2, 38.7, 153.6, 63.0
- Side View Dimension: 49.5
- Port Locations: P, T, A, B (top); P1, T1, A1, B1 (bottom)
- Dimension  $\phi 7.0^{+0.10}_{0.00}$  is indicated for a specific feature.
- O-RING CODE NO. 4KAA014AA001 is noted.

UNIT:mm



TECHNICAL DATA	
Aluminum Body Pressure Rating:	210 bar
Ductile Iron Body Pressure Rating:	350 bar
Rated flow:	60 l/min
Cartridge Valve: Refer to CO11A-X-Y-Z * Refer to Winner Cartridge Valves Catalog.	
Aluminum	0.95 kg(WITHOUT VALVES) 1.25 kg(INCLUDE VALVES)
Ductile Iron	2.62 kg(WITHOUT VALVES) 2.92 kg(INCLUDE VALVES)
* If you need the special specification. Please contact us.	



X	SELECTION FOR A PORT CONTROL
<b>11A3</b>	CAVITY ONLY(WITHOUT VALVE)
<b>CO20</b>	CO11A3020N (60LPM,2.0bar)
<b>CO03</b>	CO11A3003N (60LPM,0.3bar)
FAST ACTING	
<b>CO20N2</b>	CO11A3020N-2 (60LPM,2.0bar)
<b>CO03N2</b>	CO11A3003N-2 (60LPM,0.3bar)
Please refer to the list price of cartridge program.	

Y	SELECTION FOR B PORT CONTROL
<b>11A3</b>	CAVITY ONLY(WITHOUT VALVE)
<b>CO20</b>	CO11A3020N (60LPM,2.0bar)
<b>CO03</b>	CO11A3003N (60LPM,0.3bar)
FAST ACTING	
<b>CO20N2</b>	CO11A3020N-2 (60LPM,2.0bar)
<b>CO03N2</b>	CO11A3003N-2 (60LPM,0.3bar)
Please refer to the list price of cartridge program.	

Z	BODY MATERIAL
<b>A</b>	HIGH-STRENGTH ALUMINUM
<b>S</b>	DUCTILE IRON(Phosphatizing)
<b>E</b>	DUCTILE IRON(Zinc-Nickel plating)