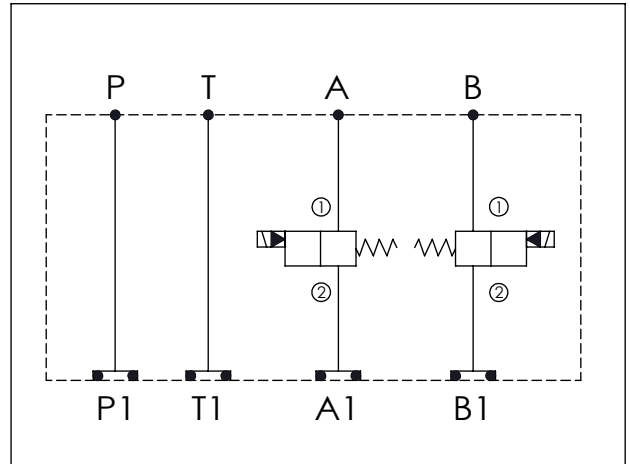


## ISO 05 SANDWICH MANIFOLD

Ordering Code:	<b>MH05EDW-X-Y-Z1</b>
Stack Height :	49.5mm

Technical drawing showing front and side views of the ISO 05 Sandwich Manifold. Dimensions are in mm. Front view shows a total length of 226.1 mm, with individual sections of 75.0 mm, 76.2 mm, and 75.0 mm. The height is 63.0 mm. A hole diameter is specified as  $\phi 7.0^{+0.10}_{0.00}$ . Side view shows a height of 49.5 mm and port labels B1, P1, and A1. An O-RING CODE NO. 4KAA014AA001 is indicated.

UNIT:mm



### TECHNICAL DATA

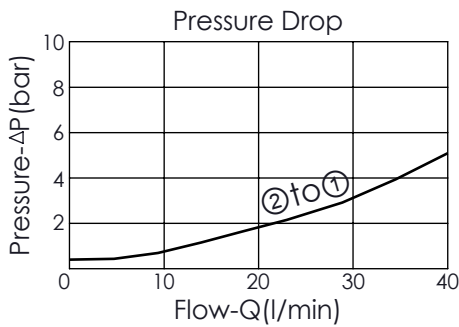
Aluminum Body Pressure Rating: 210 bar  
 Ductile Iron Body Pressure Rating: 350 bar  
 Rated flow: 40 l/min

Cartridge Valve:  
 Refer to EP08W-X-Y-Z  
 EP08W-X-Y-Z

\* Refer to Winner Cartridge Valves Catalog.

Aluminum	0.7 kg(WITHOUT VALVES) 1.0 kg(INCLUDE VALVES ,WITHOUT COIL)
----------	--

\* If you need the special specification. Please contact us.



Y	SELECTION FOR B PORT CONTROL (REFER TO EP08W-X-Y-Z)
<b>08W2</b>	CAVITY ONLY(WITHOUT VALVE)
<b>EP01</b>	EP08W2A01N05 , 40LPM,350bar (NORMALLY CLOSED,WITHOUT COIL)
<b>EP02</b>	EP08W2A02N05 , 40LPM,350bar (NORMALLY OPEN,WITHOUT COIL)
<b>EP01M</b>	EP08W2A01M05 , 40LPM,350bar(NORMALLY CLOSED WITH KNOB STYLE MANUAL OVERRIDE,WITHOUT COIL)
<b>EP02P</b>	EP08W2A02P05 , 40LPM,350bar(NORMALLY OPEN WITH PUSH STYLE MANUAL OVERRIDE,WITHOUT COIL)

COIL MUST BE ORDERED SEPARATELY (REFER TO EC-04W-X-Y-Z)

X	SELECTION FOR A PORT CONTROL (REFER TO EP08W-X-Y-Z)
<b>08W2</b>	CAVITY ONLY(WITHOUT VALVE)
<b>EP01</b>	EP08W2A01N05 , 40LPM,350bar (NORMALLY CLOSED,WITHOUT COIL)
<b>EP02</b>	EP08W2A02N05 , 40LPM,350bar (NORMALLY OPEN,WITHOUT COIL)
<b>EP01M</b>	EP08W2A01M05 , 40LPM,350bar(NORMALLY CLOSED WITH KNOB STYLE MANUAL OVERRIDE,WITHOUT COIL)
<b>EP02P</b>	EP08W2A02P05 , 40LPM,350bar(NORMALLY OPEN WITH PUSH STYLE MANUAL OVERRIDE,WITHOUT COIL)

COIL MUST BE ORDERED SEPARATELY (REFER TO EC-04W-X-Y-Z)

Z	BODY MATERIAL	
<b>A</b>	<b>HIGH-STRENGTH ALUMINUM</b>	