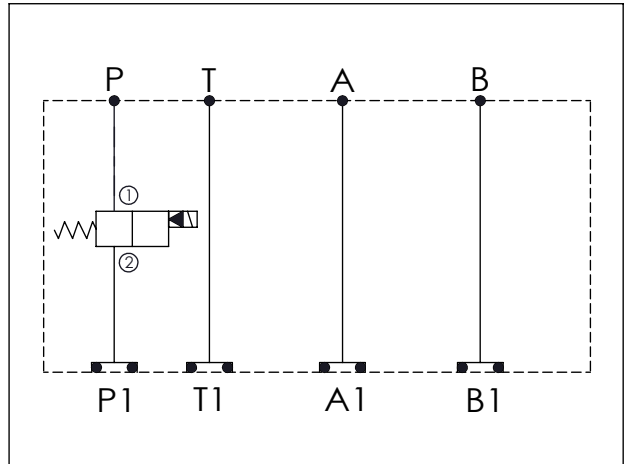


ISO 05 SANDWICH MANIFOLD

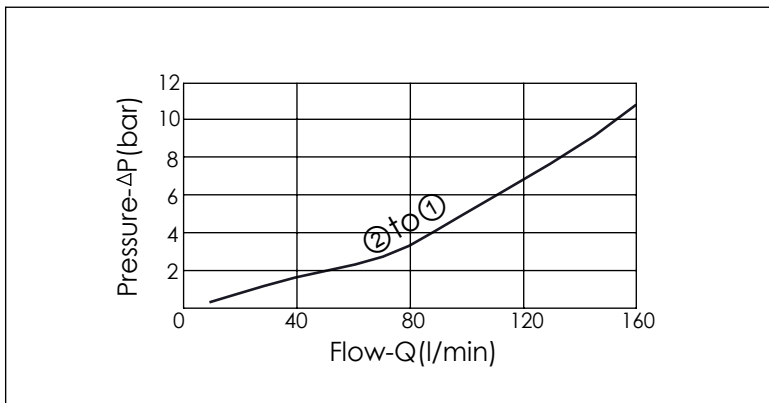
Ordering Code:	MH05EPW-X-Y-Z01
Stack Height :	49.5mm

UNIT:mm



TECHNICAL DATA	
Aluminum Body Pressure Rating:	210 bar
Ductile Iron Body Pressure Rating:	350 bar
Rated flow:	80 l/min
Cartridge Valve:	Refer to EP12W-X-Y-Z
	* Refer to Winner Cartridge Valves Catalog.
Aluminum	0.72 kg(WITHOUT VALVE) 0.95 kg(INCLUDE VALVE, WITHOUT COIL)
Ductile Iron	2.1 kg(WITHOUT VALVE) 2.33 kg(INCLUDE VALVE, WITHOUT COIL)

* If you need the special specification. Please contact us.



X	SELECTION FOR P PORT CONTROL (REFER TO EP12W-X-Y-Z)
12W2	CAVITY ONLY(WITHOUT VALVE)
EP01	EP12W2A01N05 , 150LPM,350bar (NORMALLY CLOSED,WITHOUT COIL)
EP02	EP12W2A02N05 , 150LPM,350bar (NORMALLY OPEN,WITHOUT COIL)
EP01M	EP12W2A01M05 , 150LPM,350bar(NORMALLY CLOSED WITH KNOB STYLE MANUAL OVERRIDE,WITHOUT COIL)
EP02P	EP12W2A02P05 , 150LPM,350bar(NORMALLY OPEN WITH PUSH STYLE MANUAL OVERRIDE,WITHOUT COIL)
COIL MUST BE ORDERED SEPARATELY (REFER TO EC-04W-X-Y-Z)	

Y	SELECTION FOR G PORT
N	WITHOUT PORT

Z	BODY MATERIAL
A	HIGH-STRENGTH ALUMINUM
S	DUCTILE IRON