

ISO 05 SANDWICH MANIFOLD

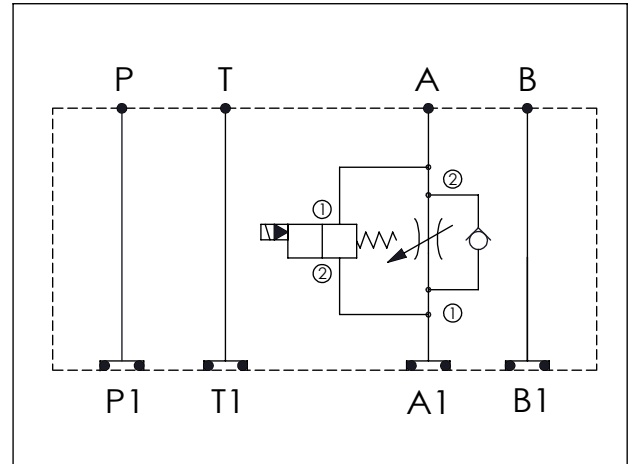
Ordering Code: **MH05FAE-X-Y-Z03**

Stack Height : 63.0mm

Technical drawing showing dimensions and port labels:

- Overall length: 82.6 + 76.2 + 81.1 = 239.9 mm
- Port diameters: P, T, A, B
- Dimension $\phi 7.0^{+0.10}_{0.00}$
- Stack Height: 63.0 mm
- O-RING CODE NO. 4KAA014AA001

UNIT:mm



TECHNICAL DATA

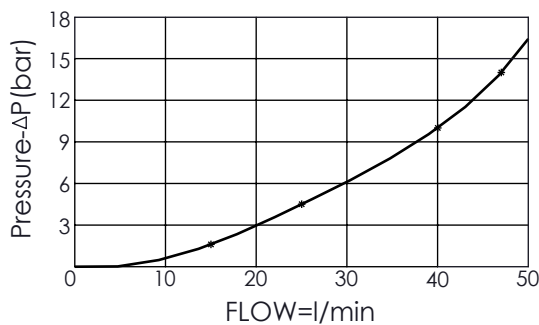
Aluminum Body Pressure Rating: 210 bar
 Ductile Iron Body Pressure Rating: 350 bar
 Rated flow: 80 l/min

Cartridge Valve:
 Refer to NC5A-X-Y-Z
 EP12W-X-Y-Z

* Refer to Winner Cartridge Valves Catalog.

Aluminum	1.05 kg (WITHOUT VALVES) 1.55 kg (INCLUDE VALVES, WITHOUT COIL)
DUCTILE IRON	3.0 kg (WITHOUT VALVES) 3.5 kg (INCLUDE VALVES, WITHOUT COIL)

* If you need the special specification. Please contact us.



X	SELECTION FOR FLOW CONTROL
5A2	CAVITY ONLY (WITHOUT VALVE)
NCBC	NC5A21BCL (2.0bar)
Please refer to the list price of cartridge program.	

Y	SELECTION FOR SOLENOID VALVES (REFER TO EP12W-X-Y-Z)
12W2	CAVITY ONLY (WITHOUT VALVE)
EP01	EP12W2A01N05, 150LPM, 350bar (NORMALLY CLOSED, WITHOUT COIL)
EP02	EP12W2A02N05, 150LPM, 350bar (NORMALLY OPEN, WITHOUT COIL)
EP01M	EP12W2A01M05, 150LPM, 350bar (NORMALLY CLOSED WITH KNOB STYLE MANUAL OVERRIDE, WITHOUT COIL)
EP02P	EP12W2A02P05, 150LPM, 350bar (NORMALLY OPEN WITH PUSH STYLE MANUAL OVERRIDE, WITHOUT COIL)
COIL MUST BE ORDERED SEPARATELY (REFER TO EC-04W-X-Y-Z)	

Z	BODY MATERIAL
A	HIGH-STRENGTH ALUMINUM
S	DUCTILE IRON