

## ISO 05 SANDWICH MANIFOLD

Ordering Code: **MH05FBI-X-Y-Z01**

Stack Height : 49.5mm

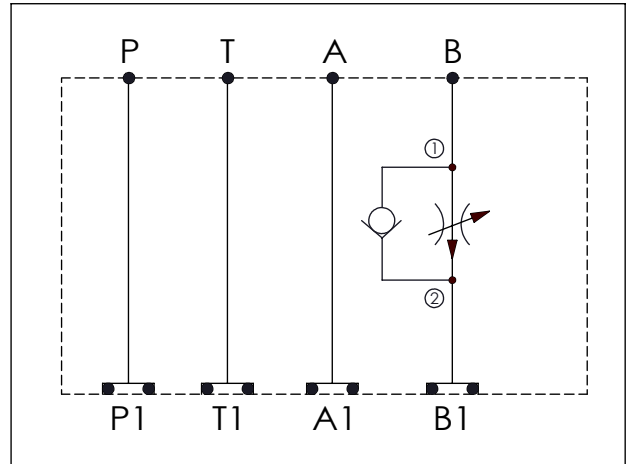
Dimensions:

- Overall height: 63.0 mm
- Port P to T distance: 70.1 mm
- Port T to A distance: 76.2 mm
- Total length: 146.3 mm
- Stack height: 49.5 mm
- Port diameter:  $\phi 7.0^{+0.10}_{0.00}$

Port Labels: P, T, A, B (top); P1, T1, A1, B1 (bottom)

O-RING CODE NO. 4KAA014AA001

UNIT:mm



### TECHNICAL DATA

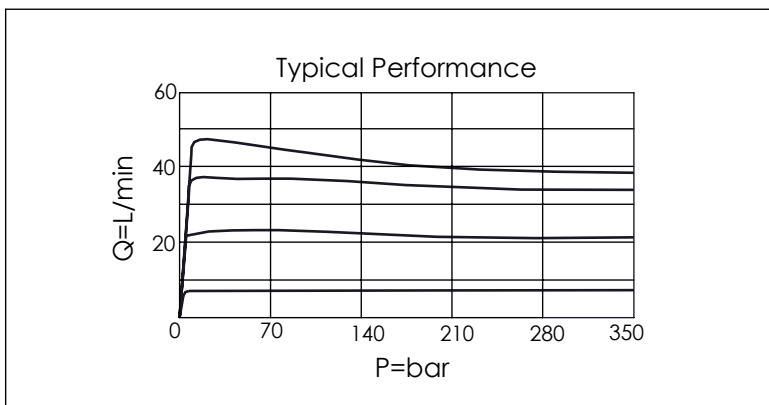
Aluminum Body Pressure Rating: 210 bar  
 Ductile Iron  
 Body Pressure Rating: 350 bar  
 Rated flow: 45 l/min  
 (Pressure Compensated)

Cartridge Valve:  
 Refer to FR5A-X-Y-Z

\* Refer to Winner Cartridge Valves Catalog.

|              |  |
|--------------|--|
| Aluminum     | 0.6 kg(WITHOUT VALVE)<br>0.87 kg(INCLUDE VALVE)  |
| Ductile Iron | 1.76 kg(WITHOUT VALVE)<br>2.03 kg(INCLUDE VALVE) |

\* If you need the special specification.  
 Please contact us.



|          |                                     |
|----------|-------------------------------------|
| <b>X</b> | <b>SELECTION FOR A PORT CONTROL</b> |
| <b>N</b> | WITHOUT PORT                        |
|          |                                     |
|          |                                     |
|          |                                     |

|             |                                     |
|-------------|-------------------------------------|
| <b>Y</b>    | <b>SELECTION FOR B PORT CONTROL</b> |
| <b>5A2</b>  | CAVITY ONLY(WITHOUT VALVE)          |
| <b>FR0A</b> | FR5A20AL (45 LPM , 350bar)          |
|             |                                     |
|             |                                     |
|             |                                     |

|          |                        |
|----------|------------------------|
| <b>Z</b> | <b>BODY MATERIAL</b>   |
| <b>A</b> | HIGH-STRENGTH ALUMINUM |
| <b>S</b> | DUCTILE IRON           |
|          |                        |
|          |                        |
|          |                        |

Please refer to the list price of cartridge program.