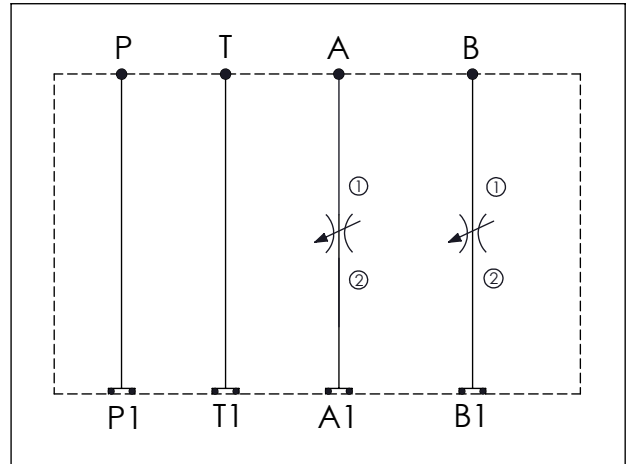


ISO 05 SANDWICH MANIFOLD

Ordering Code: **MH05FDI-X-Y-Z01**

Stack Height : 49.5mm

UNIT:mm



TECHNICAL DATA

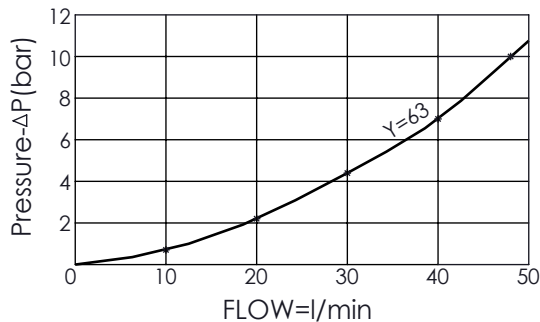
Aluminum Body Pressure Rating: 210 bar
 Ductile Iron Body Pressure Rating: 350 bar
 Rated flow: 80 l/min

Cartridge Valve:
 Refer to NV5A-X-Y-Z
 * Refer to Winner Cartridge Valves Catalog.

Aluminum	0.73 kg(WITHOUT VALVES) 1.25 kg(INCLUDE VALVES)
Ductile Iron	2.13 kg(WITHOUT VALVES) 2.65 kg(INCLUDE VALVES)

* If you need the special specification. Please contact us.

FULLY OPEN RESTRICTOR-FLOW IN BOTH DIRECTIONS



X SELECTION FOR A PORT CONTROL

5A2	CAVITY ONLY(WITHOUT VALVE)
NV63	NV5A2063L (350bar)

Please refer to the list price of cartridge program.

Y SELECTION FOR B PORT CONTROL

5A2	CAVITY ONLY(WITHOUT VALVE)
NV63	NV5A2063L (350bar)

Please refer to the list price of cartridge program.

Z BODY MATERIAL

A	HIGH-STRENGTH ALUMINUM
S	DUCTILE IRON