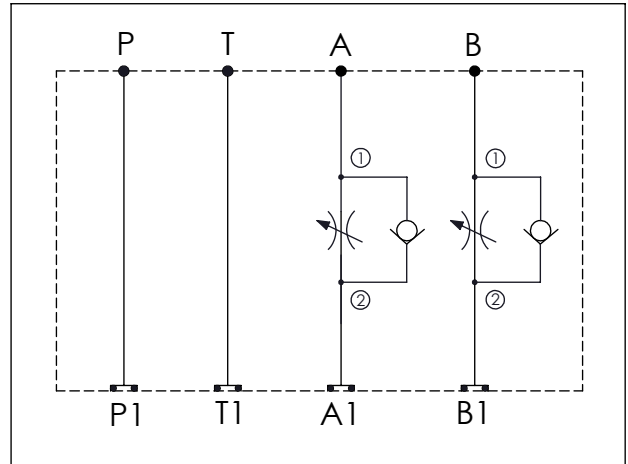


ISO 05 SANDWICH MANIFOLD

Ordering Code: **MH05FDI-X-Y-Z01**

Stack Height : 49.5mm

UNIT:mm



TECHNICAL DATA

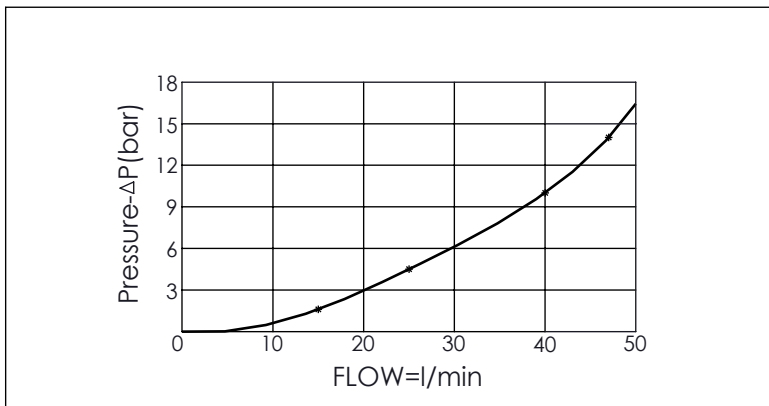
Aluminum Body Pressure Rating: 210 bar
 Ductile Iron Body Pressure Rating: 350 bar

Rated flow: 80 l/min

Cartridge Valve:
 Refer to NC5A-X-Y-Z
 * Refer to Winner Cartridge Valves Catalog.

Aluminum	0.73 kg(WITHOUT VALVES) 1.27 kg(INCLUDE VALVES)
Ductile Iron	2.13 kg(WITHOUT VALVES) 2.67 kg(INCLUDE VALVES)

* If you need the special specification. Please contact us.



X	SELECTION FOR A PORT CONTROL
5A2	CAVITY ONLY(WITHOUT VALVE)
NCBC	NC5A21BCL (2.0bar)
Please refer to the list price of cartridge program.	

Y	SELECTION FOR B PORT CONTROL
5A2	CAVITY ONLY(WITHOUT VALVE)
NCBC	NC5A21BCL (2.0bar)
Please refer to the list price of cartridge program.	

Z	BODY MATERIAL
A	HIGH-STRENGTH ALUMINUM
S	DUCTILE IRON