

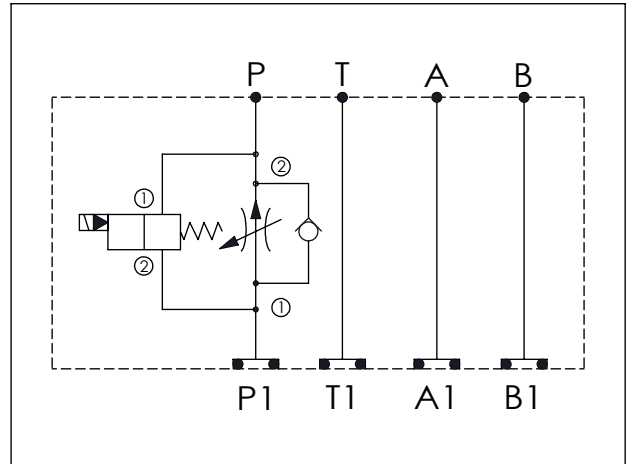
## ISO 05 SANDWICH MANIFOLD

Ordering Code:	<b>MH05FPE-X-Y-Z01</b>
Stack Height :	49.5mm

Technical drawing showing front and side views of the manifold. Dimensions are in mm. Front view shows a total length of 240.0 mm, with segments of 82.6 mm, 76.2 mm, and 81.2 mm. The height is 63.0 mm. A hole diameter is specified as  $\phi 7.0^{+0.10}_{-0.00}$ . Side view shows a height of 49.5 mm and port labels B1, P1, and A1. An O-RING CODE NO. 4KAA014AA001 is indicated.

UNIT:mm



### TECHNICAL DATA

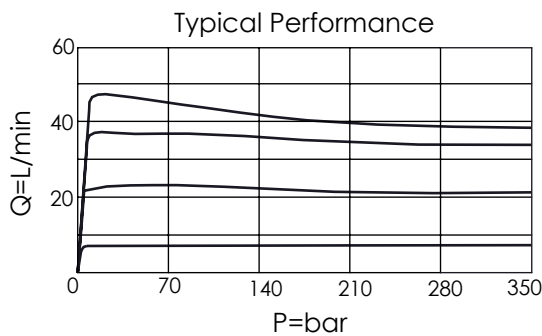
Aluminum Body Pressure Rating: 210 bar  
 Ductile Iron Body Pressure Rating: 350 bar  
 Rated flow: 45 l/min (Pressure Compensated)

Cartridge Valve:  
 Refer to FR5A-X-Y-Z  
 EP12W-X-Y-Z

\* Refer to Winner Cartridge Valves Catalog.

Aluminum	0.8 kg (WITHOUT VALVES) 1.3 kg (INCLUDE VALVES, WITHOUT COIL)
DUCTILE IRON	2.3 kg (WITHOUT VALVES) 2.8 kg (INCLUDE VALVES, WITHOUT COIL)

\* If you need the special specification. Please contact us.



<b>X</b>	<b>SELECTION FOR FLOW CONTROL</b>
<b>5A2</b>	CAVITY ONLY (WITHOUT VALVE)
<b>FR0A</b>	FR5A20AL (45 LPM , 350bar)

Please refer to the list price of cartridge program.

<b>Y</b>	<b>SELECTION FOR SOLENOID VALVES (REFER TO EP12W-X-Y-Z)</b>
<b>12W2</b>	CAVITY ONLY (WITHOUT VALVE)
<b>EP01</b>	EP12W2A01N05 , 150LPM,350bar (NORMALLY CLOSED, WITHOUT COIL)
<b>EP02</b>	EP12W2A02N05 , 150LPM,350bar (NORMALLY OPEN, WITHOUT COIL)
<b>EP01M</b>	EP12W2A01M05 , 150LPM,350bar (NORMALLY CLOSED WITH KNOB STYLE MANUAL OVERRIDE, WITHOUT COIL)
<b>EP02P</b>	EP12W2A02P05 , 150LPM,350bar (NORMALLY OPEN WITH PUSH STYLE MANUAL OVERRIDE, WITHOUT COIL)
COIL MUST BE ORDERED SEPARATELY (REFER TO EC-04W-X-Y-Z)	

<b>Z</b>	<b>BODY MATERIAL</b>
<b>A</b>	<b>HIGH-STRENGTH ALUMINUM</b>
<b>S</b>	<b>DUCTILE IRON</b>