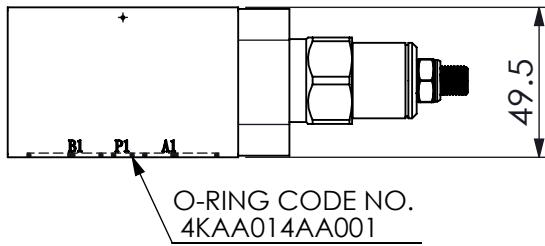
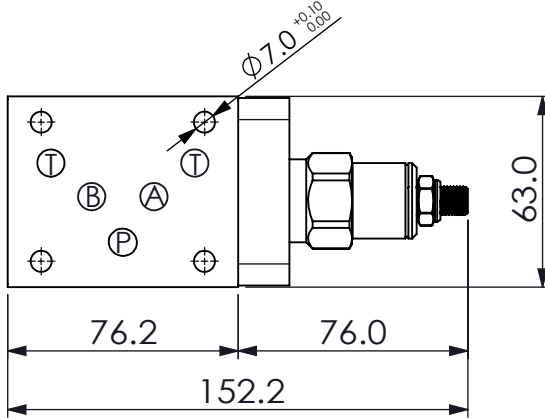
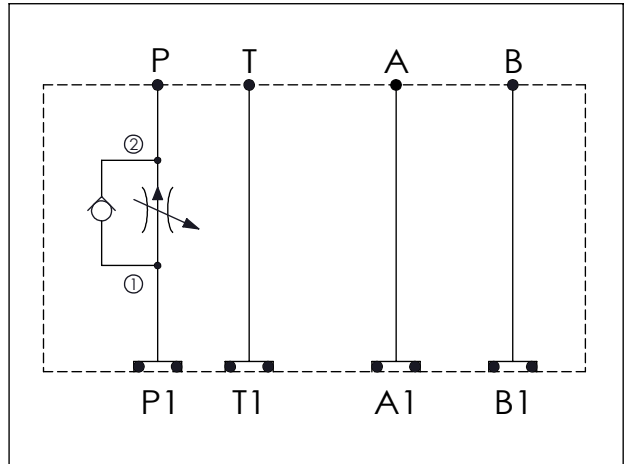


## ISO 05 SANDWICH MANIFOLD

Ordering Code: **MH05FPW-X-Y-Z01**  
 Stack Height : 49.5mm



UNIT:mm



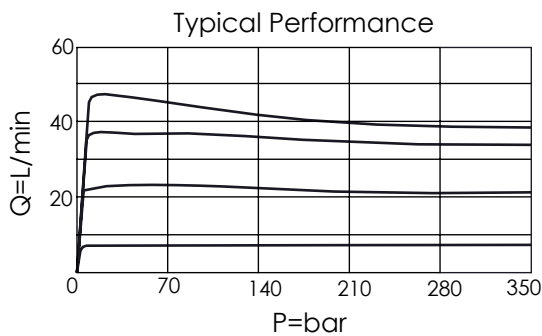
### TECHNICAL DATA

Aluminum Body Pressure Rating: 210 bar  
 Ductile Iron  
 Body Pressure Rating: 350 bar  
 Rated flow: 45 l/min  
 (Pressure Compensated)

Cartridge Valve:  
 Refer to FR5A-X-Y-Z  
 \* Refer to Winner Cartridge Valves Catalog.

Aluminum	0.64 kg(WITHOUT VALVE) 0.91 kg(INCLUDE VALVE)
Ductile Iron	1.87 kg(WITHOUT VALVES) 2.14 kg(INCLUDE VALVES)

\* If you need the special specification.  
 Please contact us.



<b>X</b>	<b>SELECTION FOR P PORT CONTROL</b>
<b>5A2</b>	CAVITY ONLY(WITHOUT VALVE)
<b>FR0A</b>	FR5A20AL (45 LPM , 350bar)
Please refer to the list price of cartridge program.	

<b>Y</b>	<b>SELECTION FOR G PORT</b>
<b>N</b>	WITHOUT PORT

<b>Z</b>	<b>BODY MATERIAL</b>
<b>A</b>	HIGH-STRENGTH ALUMINUM
<b>S</b>	DUCTILE IRON