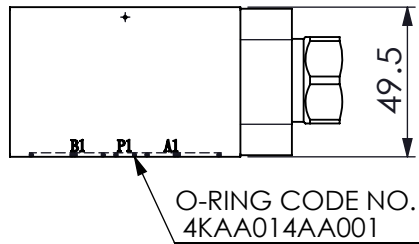
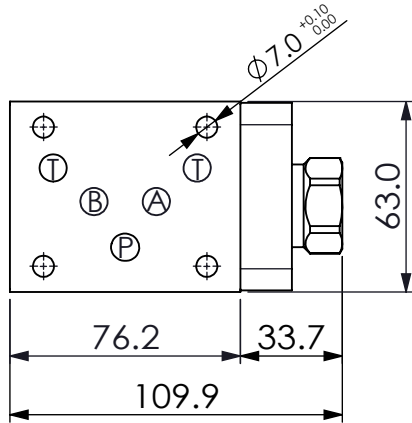


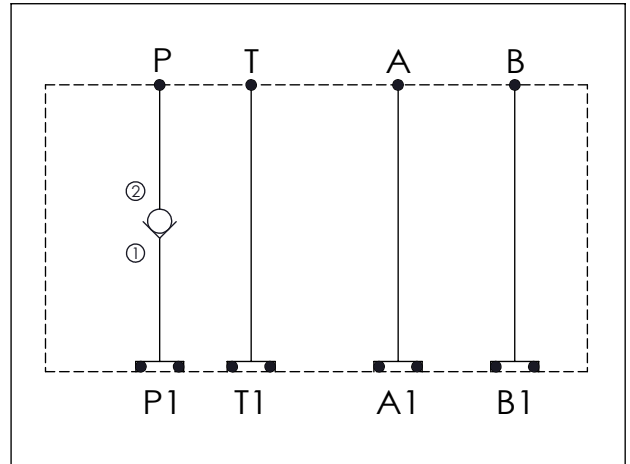
ISO 05 SANDWICH MANIFOLD

Ordering Code: **MH05FPW-X-Y-Z01**

Stack Height : 49.5mm



UNIT:mm



TECHNICAL DATA

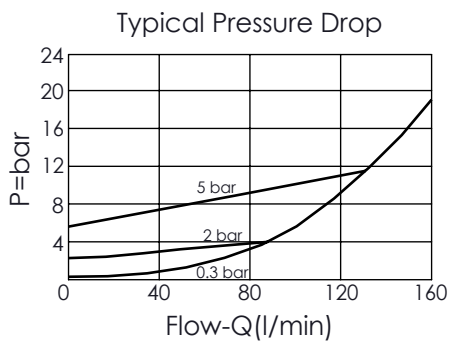
Aluminum Body Pressure Rating: 210 bar
 Ductile Iron
 Body Pressure Rating: 350 bar

Rated flow: 80 l/min

Cartridge Valve:
 Refer to CV5A-X-Y-Z
 * Refer to Winner Cartridge Valves Catalog.

Aluminum	0.64 kg(WITHOUT VALVE) 0.83 kg(INCLUDE VALVE)
Ductile Iron	1.87 kg(WITHOUT VALVES) 2.06 kg(INCLUDE VALVES)

* If you need the special specification.
 Please contact us.



X SELECTION FOR P PORT CONTROL

5A2	CAVITY ONLY(WITHOUT VALVE)
CV20015	CV5A20015N (160 LPM , 0.15bar)
CV2003	CV5A2003N (160 LPM , 0.3bar)
CV2010	CV5A2010N (160 LPM , 1.0bar)
CV2020	CV5A2020N (160 LPM , 2.0bar)
CV2035	CV5A2035N (160 LPM , 3.5bar)
CV2050	CV5A2050N (160 LPM , 5.0bar)
CV2070	CV5A2070N (160 LPM , 7.0bar)

Y SELECTION FOR G PORT

N WITHOUT PORT

Z BODY MATERIAL

A HIGH-STRENGTH ALUMINUM
S DUCTILE IRON