

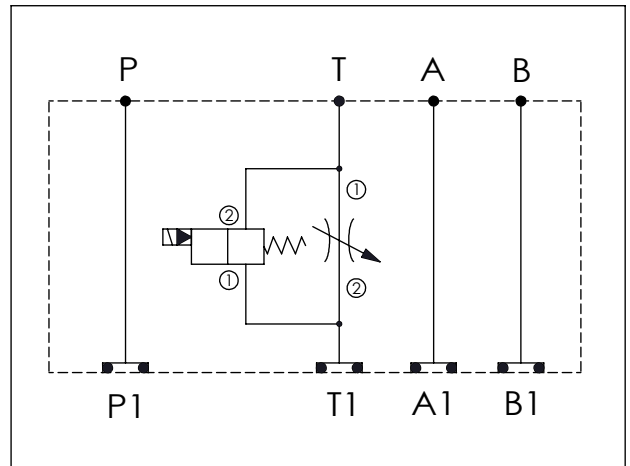
## ISO 05 SANDWICH MANIFOLD

Ordering Code: **MH05FTE-X-Y-Z01**

Stack Height : 49.5mm

Technical drawing showing dimensions and port labels (P, T, A, B, P1, T1, A1, B1). Dimensions include 82.6, 76.2, 80.8, 239.6, 63.0, and 49.5. A hole diameter is specified as  $\phi 7.0^{+0.10}_{0.00}$ . The O-RING CODE NO. is 4KAA014AA001.

UNIT:mm



### TECHNICAL DATA

Aluminum Body Pressure Rating: 210 bar  
 Ductile Iron Body Pressure Rating: 350 bar

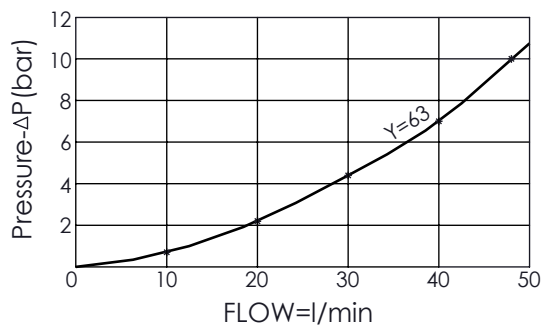
Rated flow: 80 l/min

Cartridge Valve:  
 Refer to NV5A-X-Y-Z  
 EP12W-X-Y-Z  
 \* Refer to Winner Cartridge Valves Catalog.

Aluminum	0.8 kg(WITHOUT VALVES) 1.06 kg(INCLUDE VALVES ,WITHOUT COIL)
DUCTILE IRON	2.3 kg(WITHOUT VALVES) 2.56 kg(INCLUDE VALVES ,WITHOUT COIL)

\* If you need the special specification. Please contact us.

FULLY OPEN RESTRICTOR-FLOW IN BOTH DIRECTIONS



**X** SELECTION FOR FLOW CONTROL

**5A2** CAVITY ONLY(WITHOUT VALVE)

**NV63** NV5A2063L ( 350bar)

Please refer to the list price of cartridge program.

**Y** SELECTION FOR SOLENOID VALVES (REFER TO EP12W-X-Y-Z)

**12W2** CAVITY ONLY(WITHOUT VALVE)

**EP01** EP12W2A01N05 , 150LPM,350bar (NORMALLY CLOSED,WITHOUT COIL)

**EP02** EP12W2A02N05 , 150LPM,350bar (NORMALLY OPEN,WITHOUT COIL)

**EP01M** EP12W2A01M05 , 150LPM,350bar(NORMALLY CLOSED WITH KNOB STYLE MANUAL OVERRIDE,WITHOUT COIL)

**EP02P** EP12W2A02P05 , 150LPM,350bar(NORMALLY OPEN WITH PUSH STYLE MANUAL OVERRIDE,WITHOUT COIL)

COIL MUST BE ORDERED SEPARATELY (REFER TO EC-04W-X-Y-Z)

**Z** BODY MATERIAL

**A** HIGH-STRENGTH ALUMINUM

**S** DUCTILE IRON