

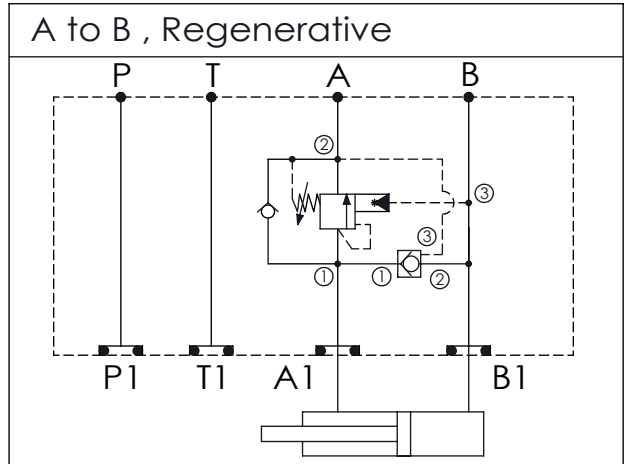
Ordering Code: **MH05GAW-X-Y-Z01**

Stack Height : 49.5mm

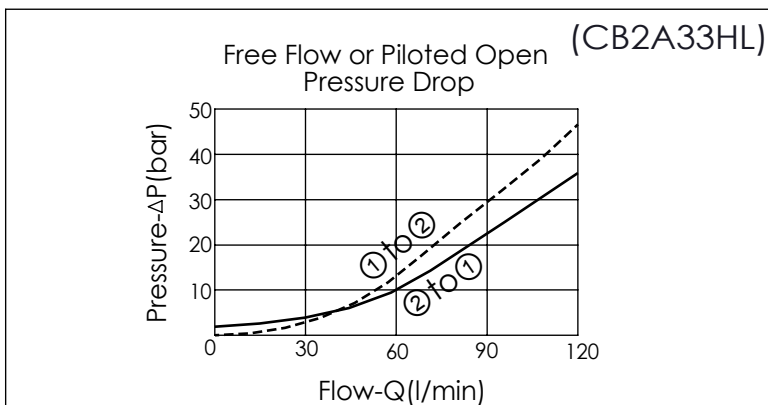
Technical drawing showing dimensions and port labels:

- CC2A (Cartridge Valve)
- CB2A (Cartridge Valve)
- Port labels: P, T, A, B, P1, T1, A1, B1
- Dimensions: 33.6, 76.2, 67.6, 177.4, 63.0, 49.5
- Port diameter:  $\phi 7.0^{+0.10}_{0.00}$
- O-RING CODE NO. 4KAA014AA001

UNIT:mm



TECHNICAL DATA	
Aluminum Body Pressure Rating:	210 bar
Ductile Iron Body Pressure Rating:	350 bar
Rated flow:	80 l/min
Cartridge Valve:	Refer to CB2A-X-Y-Z CC2A-X-Y-Z
* Refer to Winner Cartridge Valves Catalog.	
Aluminum	0.76 kg(WITHOUT VALVES) 1.29 kg(INCLUDE VALVES)



\* If you need the special specification. Please contact us.

X	SELECTION FOR COUNTERBALANCE VALVE
2A3	CAVITY ONLY(WITHOUT VALVE)
CB3H	CB2A33HL (120LPM , 70-280bar)
Please refer to the list price of cartridge program.	

Y	SELECTION FOR PILOT-TO-CLOSE VALVE
2A3	CAVITY ONLY(WITHOUT VALVE)
CC50	CC2A3050N (160LPM , 5.0bar)

Z	BODY MATERIAL
A	HIGH-STRENGTH ALUMINUM

Please refer to the list price of cartridge program.