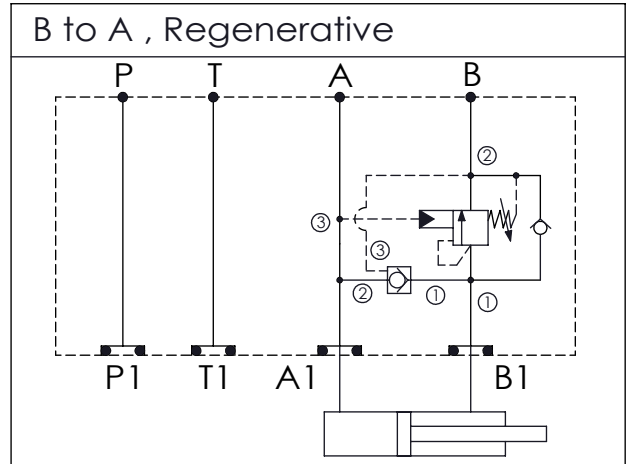


Ordering Code: **MH05GBW-X-Y-Z01**

Stack Height : 49.5mm

UNIT:mm



### TECHNICAL DATA

Aluminum Body Pressure Rating: 210 bar  
 Ductile Iron Body Pressure Rating: 350 bar

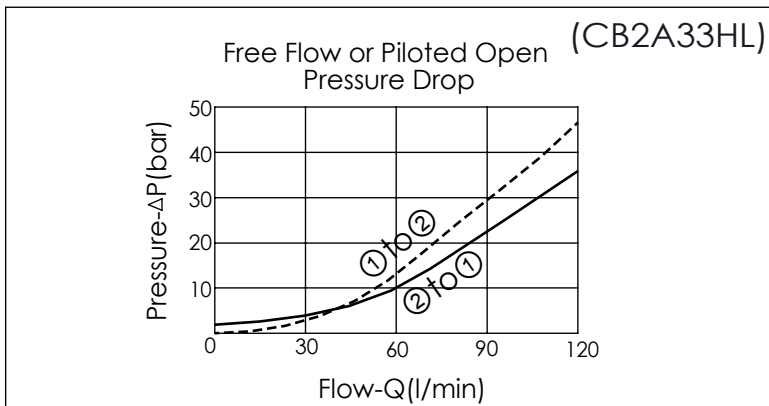
Rated flow: 80 l/min

Cartridge Valve:  
 Refer to CC2A-X-Y-Z  
 CB2A-X-Y-Z

\* Refer to Winner Cartridge Valves Catalog.

Aluminum	0.76 kg(WITHOUT VALVES) 1.29 kg(INCLUDE VALVES)
Ductile Iron	2.25 kg(WITHOUT VALVES) 2.75 kg(INCLUDE VALVES)

\* If you need the special specification. Please contact us.



<b>X</b>	<b>SELECTION FOR PILOT-TO-CLOSE VALVE</b>
<b>2A3</b>	CAVITY ONLY(WITHOUT VALVE)
<b>CC50</b>	CC2A3050N (160LPM , 5.0bar)
Please refer to the list price of cartridge program.	

<b>Y</b>	<b>SELECTION FOR COUNTERBALANCE VALVE</b>
<b>2A3</b>	CAVITY ONLY(WITHOUT VALVE)
<b>CB3H</b>	CB2A33HL (120LPM , 70-280bar)

<b>Z</b>	<b>BODY MATERIAL</b>
<b>A</b>	HIGH-STRENGTH ALUMINUM
<b>S</b>	DUCTILE IRON

Please refer to the list price of cartridge program.