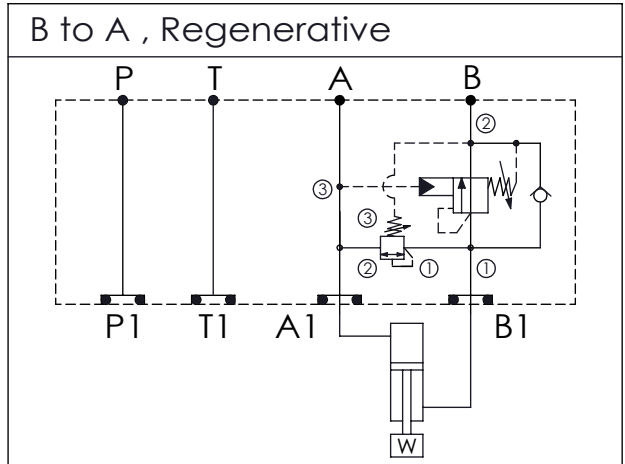


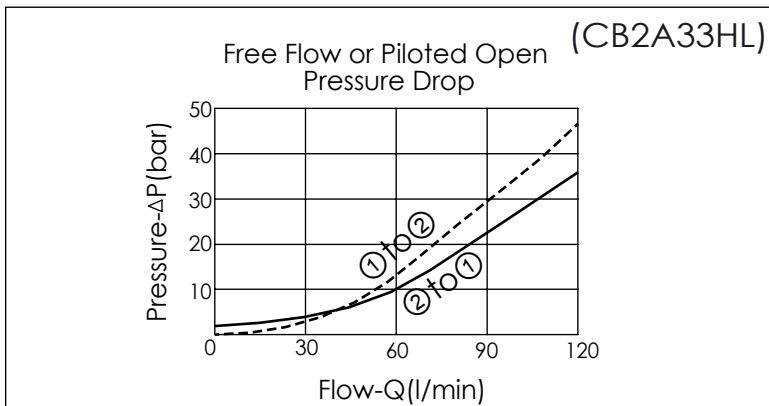
Ordering Code: **MH05GBW-X-Y-Z01**

Stack Height : 49.5mm

UNIT:mm



TECHNICAL DATA	
Aluminum Body Pressure Rating:	210 bar
Ductile Iron Body Pressure Rating:	350 bar
Rated flow:	80 l/min
Cartridge Valve:	Refer to SD2A-X-Y-Z CB2A-X-Y-Z
* Refer to Winner Cartridge Valves Catalog.	
Aluminum	0.76 kg(WITHOUT VALVES) 1.41 kg(INCLUDE VALVES)
Ductile Iron	2.25 kg(WITHOUT VALVES) 2.9 kg(INCLUDE VALVES)
* If you need the special specification. Please contact us.	



X	SELECTION FOR PILOT-TO-CLOSE VALVE
2A3	CAVITY ONLY(WITHOUT VALVE)
SD0A	SD2A30AL (120LPM , 35-210bar)
SD0B	SD2A30BL (120LPM , 20-105bar)
Please refer to the list price of cartridge program.	

Y	SELECTION FOR COUNTERBALANCE VALVE
2A3	CAVITY ONLY(WITHOUT VALVE)
CB3H	CB2A33HL (120LPM , 70-280bar)

Z	BODY MATERIAL
A	HIGH-STRENGTH ALUMINUM
S	DUCTILE IRON

Please refer to the list price of cartridge program.