

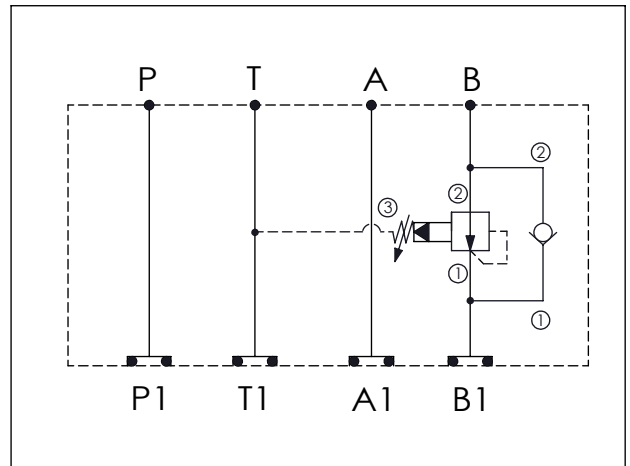
Ordering Code: **MH05PBC-X-Y-Z03**

Stack Height : 63.0mm

Technical drawing showing dimensions and port labels:

- Dimensions: 43.7, 76.2, 56.4, 176.3, 63.0
- Port labels: P, T, A, B, P1, T1, A1, B1
- Dimension: $\phi 7.0^{+0.10}_{0.00}$
- O-RING CODE NO. 4KAA014AA001

UNIT:mm



TECHNICAL DATA

Aluminum Body Pressure Rating: 210 bar
 Ductile Iron Body Pressure Rating: 350 bar

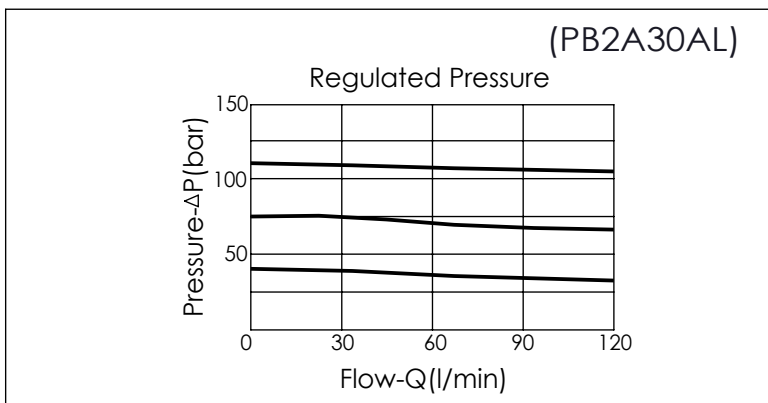
Rated flow: 80 l/min

Cartridge Valve:
 Refer to PB2A-X-Y-Z
 CV5A-X-Y-Z

* Refer to Winner Cartridge Valves Catalog.

Aluminum	0.92 kg(WITHOUT VALVES) 1.42 kg(INCLUDE VALVES)
Ductile Iron	2.65 kg(WITHOUT VALVES) 3.15 kg(INCLUDE VALVES)

* If you need the special specification. Please contact us.



X	SELECTION FOR A PORT CONTROL
2A3	CAVITY ONLY(WITHOUT VALVE)
PB0A	PB2A30AL (80LPM , 7-210bar)
Please refer to the list price of cartridge program.	

Y	SELECTION FOR CHECK VALVE
5A2	CAVITY ONLY(WITHOUT VALVE)
CP00	CP5A2H00N (PLUG ONLY)
CV2020	CV5A2020N (160LPM , 2.0bar)
Please refer to the list price of cartridge program.	

Z	BODY MATERIAL
A	HIGH-STRENGTH ALUMINUM
S	DUCTILE IRON