

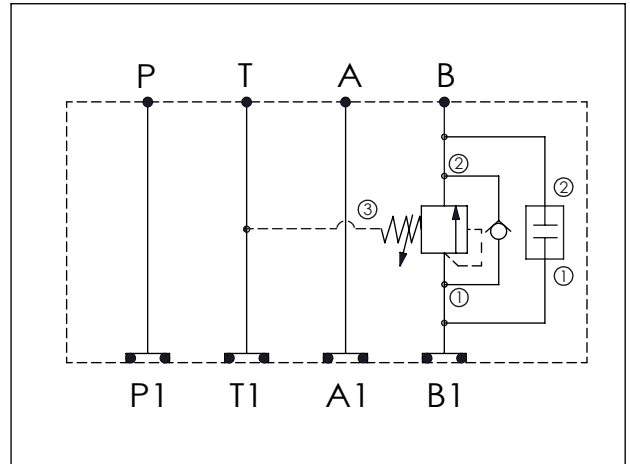
## ISO 05 SANDWICH MANIFOLD

Ordering Code: **MH05PBC-X-Y-Z 03**

Stack Height : 63.0mm

Technical drawing showing dimensions and port labels (P, T, A, B, P1, T1, A1, B1). Dimensions include 43.7, 76.2, 71.7, 191.6, and 63.0. A hole diameter is specified as  $\phi 7.0^{+0.10}_{0.00}$ . The O-RING CODE NO. is 4KAA014AA001.

UNIT:mm



### TECHNICAL DATA

Aluminum Body Pressure Rating: 210 bar  
 Ductile Iron Body Pressure Rating: 350 bar

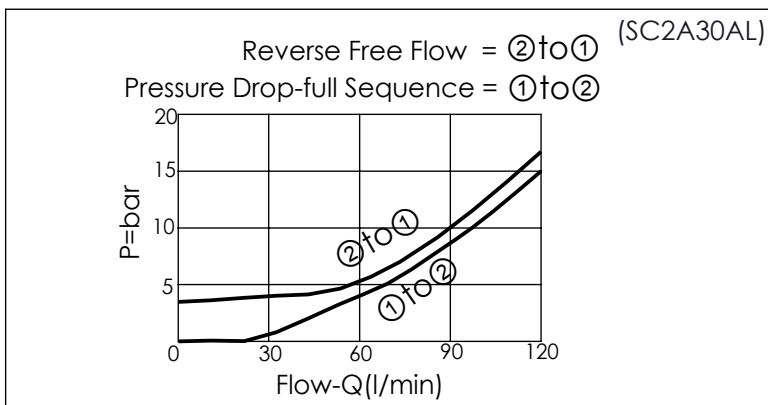
Rated flow: 80 l/min

Cartridge Valve:  
 Refer to SC2A-X-Y-Z  
 CP5A-Y-Z

\* Refer to Winner Cartridge Valves Catalog.

Aluminum	0.92 kg(WITHOUT VALVES) 1.42 kg(INCLUDE VALVES)
Ductile Iron	2.65 kg(WITHOUT VALVES) 3.15 kg(INCLUDE VALVES)

\* If you need the special specification. Please contact us.



<b>X</b>	<b>SELECTION FOR A PORT CONTROL</b>
<b>2A3</b>	CAVITY ONLY(WITHOUT VALVE)
<b>SC0A</b>	SC2A30AL (120LPM , 35-210bar)
Please refer to the list price of cartridge program.	

<b>Y</b>	<b>SELECTION FOR CHECK VALVE</b>
<b>5A2</b>	CAVITY ONLY(WITHOUT VALVE)
<b>CP00</b>	CP5A2H00N (PLUG ONLY)

<b>Z</b>	<b>BODY MATERIAL</b>
<b>A</b>	HIGH-STRENGTH ALUMINUM
<b>S</b>	DUCTILE IRON

Please refer to the list price of cartridge program.