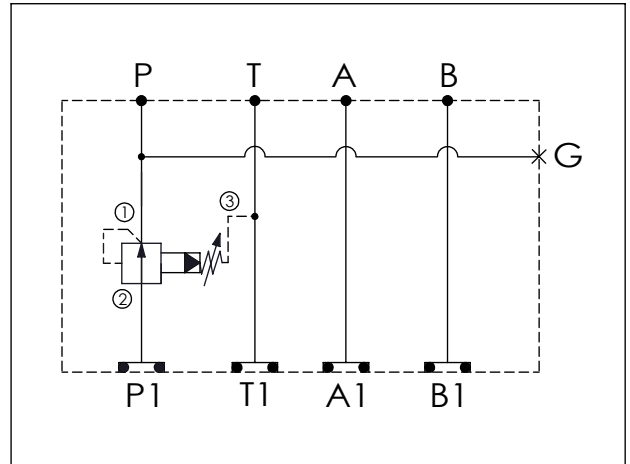


ISO 05 SANDWICH MANIFOLD

Ordering Code: **MH05PPW-X-Y-Z21**

Stack Height : 49.5mm

UNIT:mm



TECHNICAL DATA

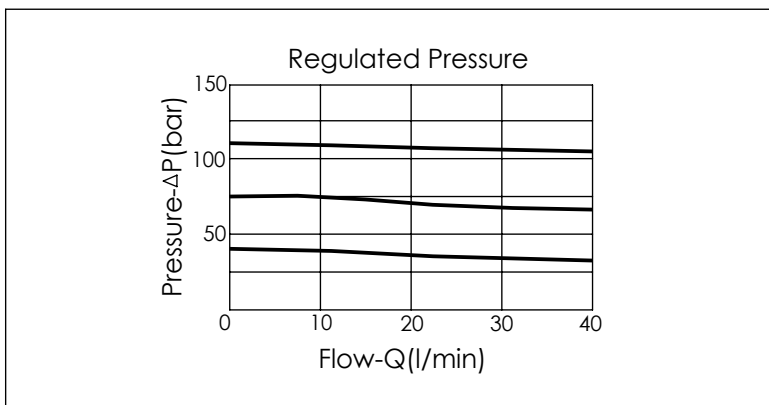
Aluminum Body Pressure Rating: 210 bar
 Ductile Iron
 Body Pressure Rating: 350 bar

Rated flow: 40 l/min

Cartridge Valve:
 Refer to PB11A-X-Y-Z
 * Refer to Winner Cartridge Valve Catalog.

Aluminum	0.7 kg(WITHOUT VALVE)
	0.9 kg(INCLUDE VALVE)

* If you need the special specification.
 Please contact us.



X	SELECTION FOR P PORT CONTROL
11A3	CAVITY ONLY (WITHOUT VALVE)
PB0A	PB11A30AL (40 LPM , 7-210bar)
Please refer to the list price of cartridge program.	

Y	SELECTION FOR G PORT
G02	G 1/4"(Metric)
N02	NPT 1/4"(U.S. Units)

Z	BODY MATERIAL
A	HIGH-STRENGTH ALUMINUM