

ISO 05 SANDWICH MANIFOLD

Ordering Code: **MH05RAH-X-Y-Z01**

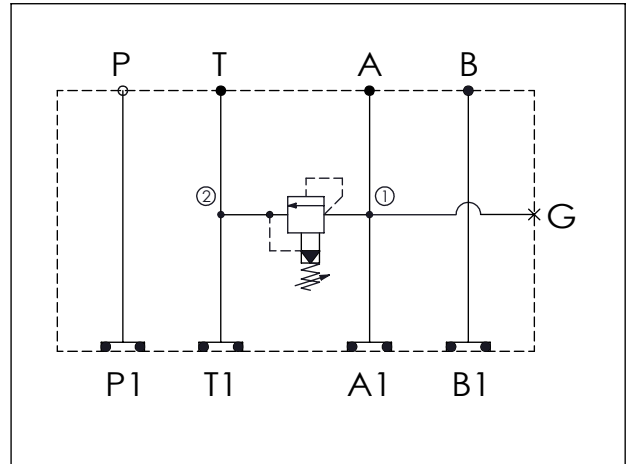
Stack Height : 49.5mm

Dimensions:
 Total height: 63.0 mm
 Port offset: 59.8 mm
 Port offset: 76.2 mm
 Total width: 140.3 mm
 Port diameter: $\phi 7.0^{+0.10}_{0.00}$

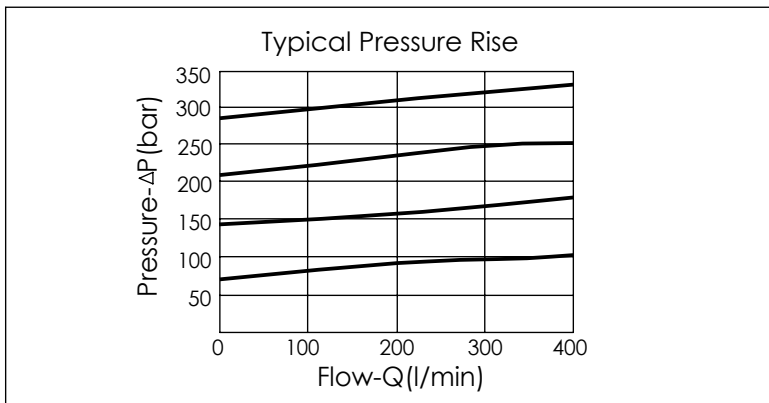
Ports: P, T, A, B, G, P1, T1, A1, B1

O-RING CODE NO. 4KAA014AA001

UNIT:mm



TECHNICAL DATA	
Aluminum Body Pressure Rating:	210 bar
Ductile Iron Body Pressure Rating:	350 bar
Rated flow:	80 l/min
Cartridge Valve:	Refer to RP3A-X-Y-Z
	* Refer to Winner Cartridge Valves Catalog.
Aluminum	0.56 kg(WITHOUT VALVE) 0.86 kg(INCLUDE VALVE)
Ductile Iron	1.64 kg(WITHOUT VALVE) 1.94 kg(INCLUDE VALVE)
* If you need the special specification. Please contact us.	



X	SELECTION FOR G PORT	
G02	G 1/4"(Metric)	
N02	NPT 1/4"(U.S. Units)	

Y	SELECTION FOR B PORT CONTROL
3A2	CAVITY ONLY(WITHOUT VALVE)
RP0A	RP3A20AL (200 LPM , 7-210bar)

Z	BODY MATERIAL	
A	HIGH-STRENGTH ALUMINUM	
S	DUCTILE IRON	

Please refer to the list price of cartridge program.