

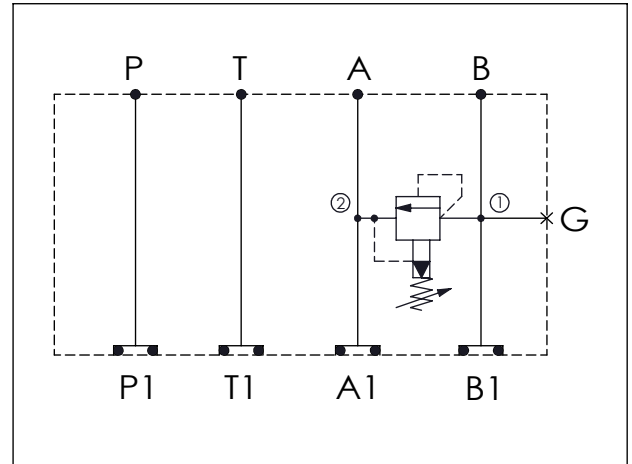
Ordering Code: **MH05RBA-X-Y-Z01**

Stack Height : 49.5mm

Technical drawing showing dimensions and port labels:

- Overall width: 140.3
- Distance from left edge to center of G port: 76.2
- Distance from center of G port to right edge: 59.8
- Height: 63.0
- Stack Height: 49.5
- Port labels: P, T, A, B, P1, T1, A1, B1, G PORT
- O-RING CODE NO. 4KAA014AA001
- Dimension $\phi 7.0^{+0.10}_{0.00}$

UNIT:mm



TECHNICAL DATA

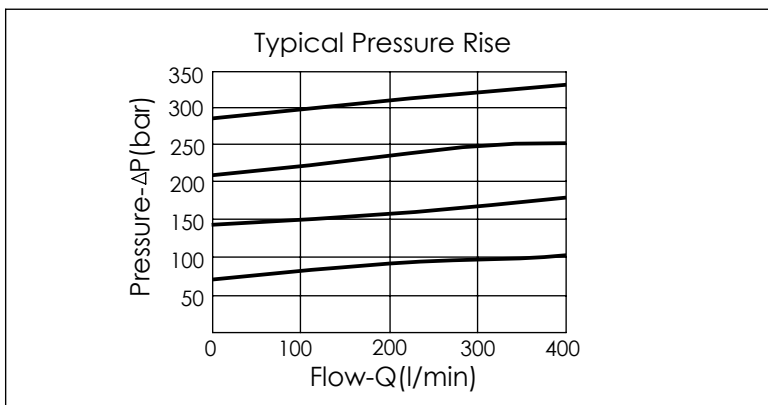
Aluminum Body Pressure Rating: 210 bar
 Ductile Iron Body Pressure Rating: 350 bar

Rated flow: 80 l/min

Cartridge Valve:
 Refer to RP3A-X-Y-Z
 * Refer to Winner Cartridge Valves Catalog.

Aluminum	0.56 kg(WITHOUT VALVE) 0.81 kg(INCLUDE VALVE)
----------	--

* If you need the special specification. Please contact us.



X	SELECTION FOR A PORT CONTROL
3A2	CAVITY ONLY(WITHOUT VALVE)
RPOA	RP3A20AL (200 LPM , 7-210bar)
Please refer to the list price of cartridge program.	

Y	SELECTION FOR G PORT
G02	G 1/4"(Metric)
N02	NPT 1/4"(U.S. Units)

Z	BODY MATERIAL
A	HIGH-STRENGTH ALUMINUM