

ISO 05 SANDWICH MANIFOLD

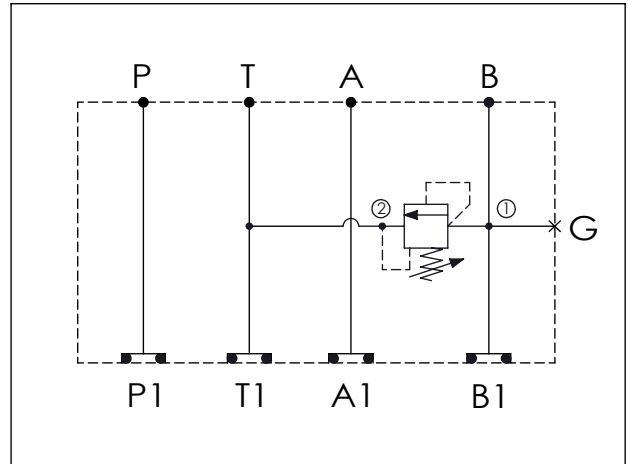
Ordering Code: **MH05RBH-X-Y-Z01**

Stack Height : 49.5mm

Technical drawing showing dimensions and port labels:

- Top View Dimensions: 76.2, 70.6, 151.1, 63.0
- Side View Dimension: 49.5
- Port Labels: P, T, A, B, G, P1, T1, A1, B1
- Dimension: $\phi 7.0^{+0.10}_{0.00}$
- O-RING CODE NO. 4KAA014AA001

UNIT:mm



TECHNICAL DATA

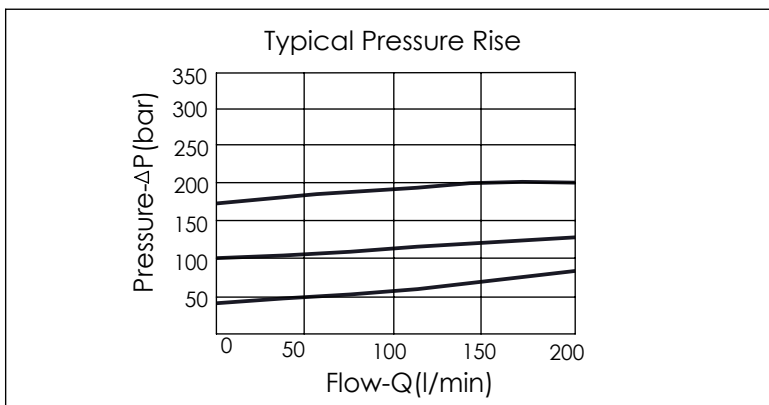
Aluminum Body Pressure Rating: 210 bar
 Ductile Iron Body Pressure Rating: 350 bar

Rated flow: 80 l/min

Cartridge Valve:
 Refer to RD3A-X-Y-Z
 * Refer to Winner Cartridge Valves Catalog.

Aluminum	0.56 kg(WITHOUT VALVE) 0.86 kg(INCLUDE VALVE)
Ductile Iron	1.64 kg(WITHOUT VALVE) 1.94 kg(INCLUDE VALVE)

* If you need the special specification. Please contact us.



X	SELECTION FOR A PORT CONTROL
3A2	CAVITY ONLY(WITHOUT VALVE)
RD5A	RD3A25AL (200 LPM , 35-210bar)
Please refer to the list price of cartridge program.	

Y	SELECTION FOR G PORT
G02	G 1/4"(Metric)
N02	NPT 1/4"(U.S. Units)

Z	BODY MATERIAL
A	HIGH-STRENGTH ALUMINUM
S	DUCTILE IRON