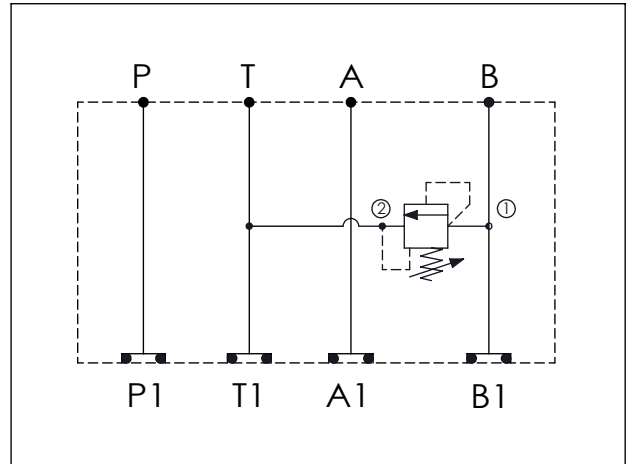


ISO 05 SANDWICH MANIFOLD

Ordering Code: **MH05RBH-X-Y-Z01**

Stack Height : 49.5mm

UNIT:mm



TECHNICAL DATA

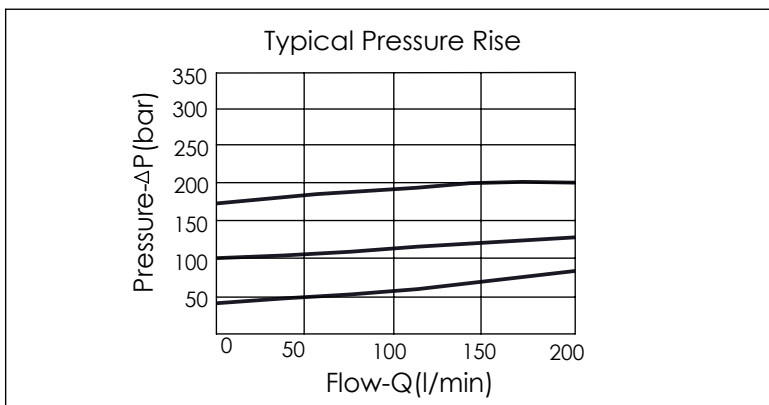
Aluminum Body Pressure Rating: 210 bar
 Ductile Iron Body Pressure Rating: 350 bar

Rated flow: 80 l/min

Cartridge Valve:
 Refer to RD3A-X-Y-Z
 * Refer to Winner Cartridge Valves Catalog.

Aluminum	0.71 kg(WITHOUT VALVE) 1.01 kg(INCLUDE VALVE)
Ductile Iron	2.08 kg(WITHOUT VALVE) 2.38 kg(INCLUDE VALVE)

* If you need the special specification. Please contact us.



X	SELECTION FOR A PORT CONTROL
3A2	CAVITY ONLY(WITHOUT VALVE)
RD5A	RD3A25AL (200 LPM , 35-210bar)
Please refer to the list price of cartridge program.	

Y	SELECTION FOR B PORT CONTROL
N	WITHOUT PORT

Z	BODY MATERIAL
A	HIGH-STRENGTH ALUMINUM
S	DUCTILE IRON