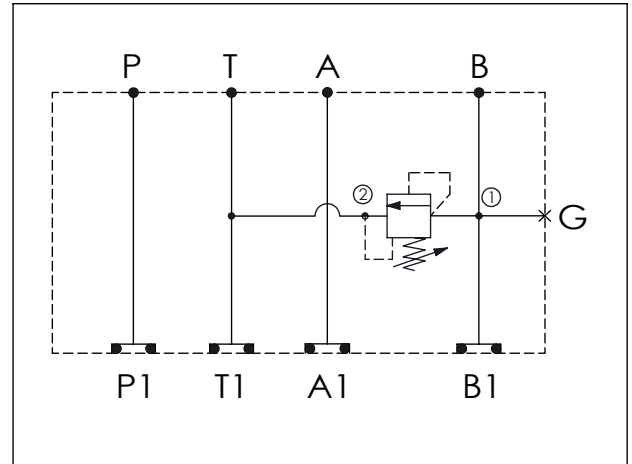


Ordering Code: **MH05RBW-X-Y-Z01**

Stack Height : 49.5mm

UNIT:mm



TECHNICAL DATA

Aluminum Body Pressure Rating: 210 bar

Ductile Iron

Body Pressure Rating: 350 bar

Rated flow: 80 l/min

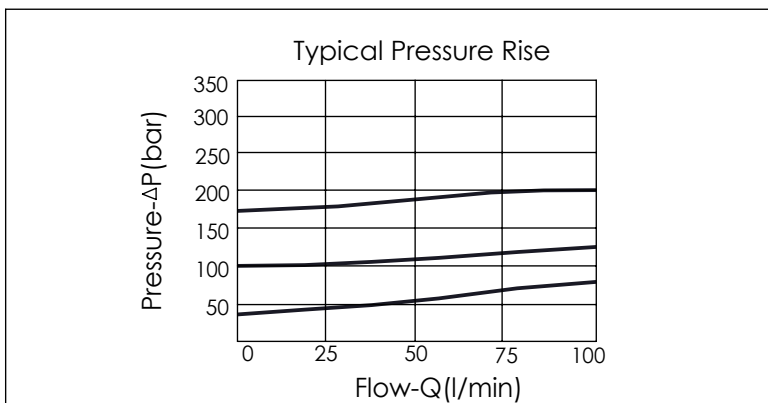
Cartridge Valve:

Refer to RD10A-X-Y-Z

* Refer to Winner Cartridge Valves Catalog.

Aluminum	0.7 kg(WITHOUT VALVE)
	0.89 kg(INCLUDE VALVE)
Ductile Iron	2.04 kg(WITHOUT VALVE)
	2.23 kg(INCLUDE VALVE)

* If you need the special specification.
Please contact us.



X	SELECTION FOR A PORT CONTROL
10A2	CAVITY ONLY(WITHOUT VALVE)
RD5A	RD10A25AL (95 LPM , 35-210bar)
Please refer to the list price of cartridge program.	

Y	SELECTION FOR G PORT
G02	G 1/4"(Metric)
N02	NPT 1/4"(U.S. Units)

Z	BODY MATERIAL
A	HIGH-STRENGTH ALUMINUM
S	DUCTILE IRON