

ISO 05 SANDWICH MANIFOLD

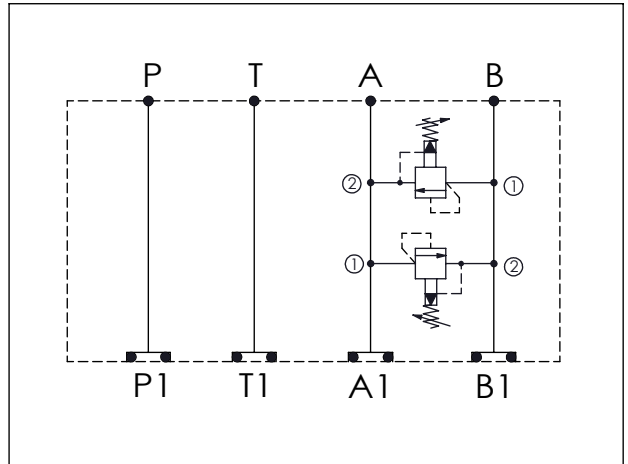
Ordering Code: **MH05RDH-X-Y-Z01**

Stack Height : 49.5mm

Technical drawing showing dimensions and port labels:

- Overall length: 221.9 mm
- Port spacing: 72.9 mm (P1 to T1), 76.2 mm (T1 to A1), 72.9 mm (A1 to B1)
- Overall height: 63.0 mm
- Port diameter: $\phi 7.0^{+0.10}_{0.00}$
- Stack height: 49.5 mm
- Port labels: P, T, A, B (top view); P1, T1, A1, B1 (bottom view)
- O-RING CODE NO. 4KAA014AA001

UNIT:mm



TECHNICAL DATA

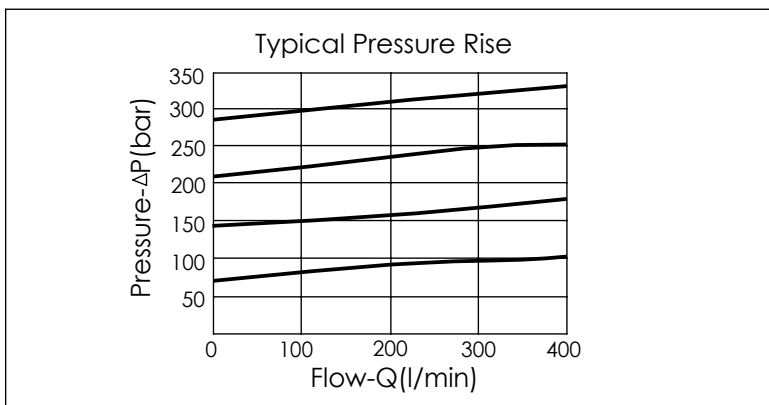
Aluminum Body Pressure Rating: 210 bar
 Ductile Iron Body Pressure Rating: 350 bar

Rated flow: 80 l/min

Cartridge Valve:
 Refer to RP3A-X-Y-Z
 * Refer to Winner Cartridge Valves Catalog.

Aluminum	0.76 kg(WITHOUT VALVES) 1.26 kg(INCLUDE VALVES)
Ductile Iron	2.25 kg(WITHOUT VALVES) 2.75 kg(INCLUDE VALVES)

* If you need the special specification. Please contact us.



X	SELECTION FOR A PORT CONTROL
3A2	CAVITY ONLY(WITHOUT VALVE)
RP0A	RP3A20AL (200 LPM , 7-210bar)
Please refer to the list price of cartridge program.	

Y	SELECTION FOR B PORT CONTROL
3A2	CAVITY ONLY(WITHOUT VALVE)
RP0A	RP3A20AL (200 LPM , 7-210bar)
Please refer to the list price of cartridge program.	

Z	BODY MATERIAL
A	HIGH-STRENGTH ALUMINUM
S	DUCTILE IRON