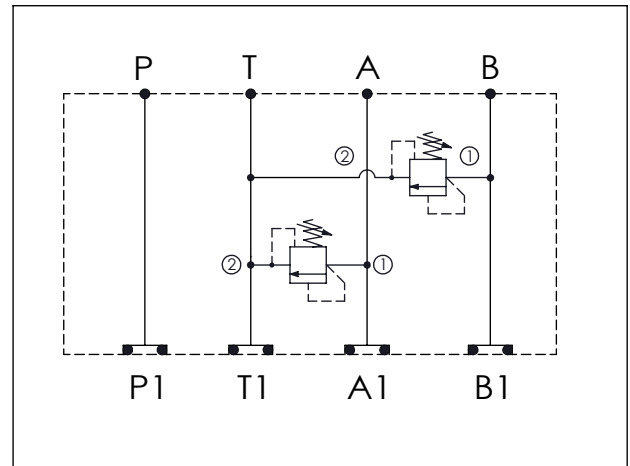


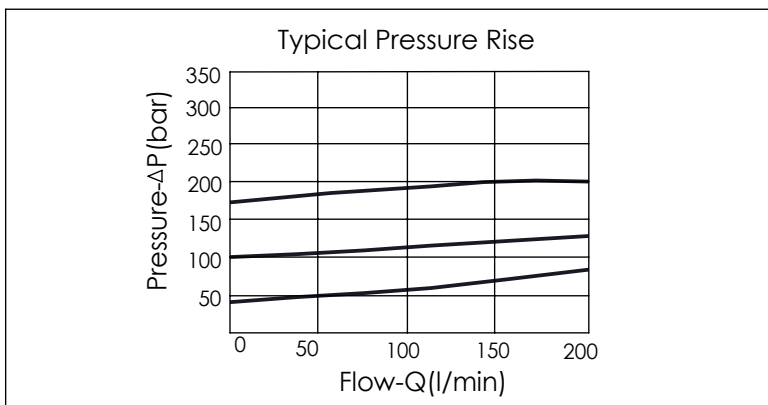
ISO 05 SANDWICH MANIFOLD

Ordering Code:	MH05RDT-X-Y-Z01
Stack Height :	49.5mm

Technical drawing showing side and front views of the ISO 05 Sandwich Manifold. Dimensions are in mm. Side view shows a total length of 252.4 mm, with 88.1 mm for each end fitting and 76.2 mm for the central body. The diameter of the central body is $\phi 7.0^{+0.10}_{-0.20}$. The height of the manifold is 63.0 mm. The front view shows the manifold height as 49.5 mm and labels for ports B1, P1, and A1. An O-RING CODE NO. 4KAA014AA001 is indicated. A unit symbol 'UNIT:mm' and a drawing symbol are also present.



TECHNICAL DATA	
Aluminum Body Pressure Rating:	210 bar
Ductile Iron Body Pressure Rating:	350 bar
Rated flow:	80 l/min
Cartridge Valve: Refer to RD3A-X-Y-Z * Refer to Winner Cartridge Valves Catalog.	
Aluminum	0.85 kg(WITHOUT VALVES) 1.45 kg(INCLUDE VALVES)
Ductile Iron	2.45 kg(WITHOUT VALVES) 3.05 kg(INCLUDE VALVES)
* If you need the special specification. Please contact us.	



X	SELECTION FOR A PORT CONTROL
3A2	CAVITY ONLY(WITHOUT VALVE)
RD5A	RD3A25AL (200LPM , 35-210bar)
Please refer to the list price of cartridge program.	

Y	SELECTION FOR B PORT CONTROL
3A2	CAVITY ONLY(WITHOUT VALVE)
RD5A	RD3A25AL (200LPM , 35-210bar)
Please refer to the list price of cartridge program.	

Z	BODY MATERIAL
A	HIGH-STRENGTH ALUMINUM
S	DUCTILE IRON
Please refer to the list price of cartridge program.	