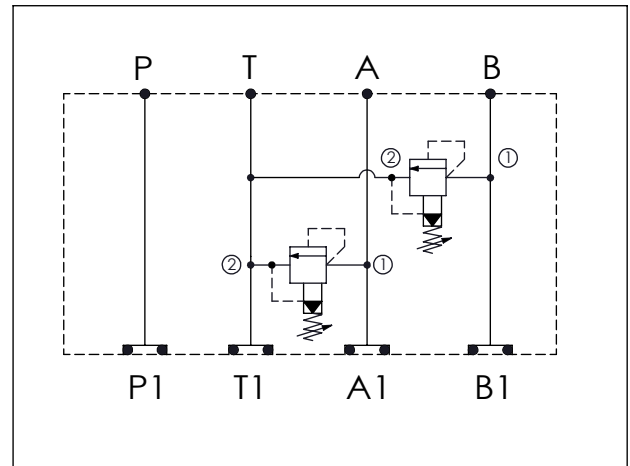


ISO 05 SANDWICH MANIFOLD

Ordering Code: **MH05RDT-X-Y-Z01**

Stack Height : 49.5mm

UNIT:mm



TECHNICAL DATA

Aluminum Body Pressure Rating: 210 bar

Ductile Iron

Body Pressure Rating: 350 bar

Rated flow: 80 l/min

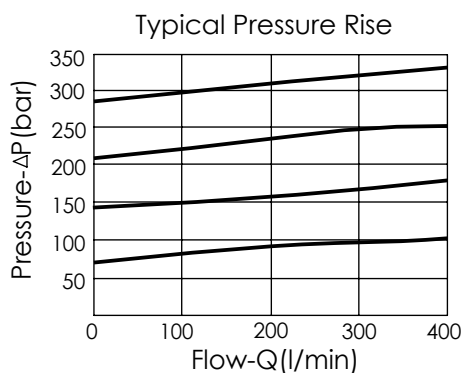
Cartridge Valve:

Refer to RP3A-X-Y-Z

* Refer to Winner Cartridge Valves Catalog.

Aluminum	0.85 kg(WITHOUT VALVES) 1.45 kg(INCLUDE VALVES)
Ductile Iron	2.45 kg(WITHOUT VALVES) 3.05 kg(INCLUDE VALVES)

* If you need the special specification. Please contact us.



X	SELECTION FOR A PORT CONTROL
3A2	CAVITY ONLY(WITHOUT VALVE)
RP0A	RP3A20AL (200LPM , 7-210bar)
Please refer to the list price of cartridge program.	

Y	SELECTION FOR B PORT CONTROL
3A2	CAVITY ONLY(WITHOUT VALVE)
RP0A	RP3A20AL (200LPM , 7-210bar)
Please refer to the list price of cartridge program.	

Z	BODY MATERIAL
A	HIGH-STRENGTH ALUMINUM
S	DUCTILE IRON
Please refer to the list price of cartridge program.	