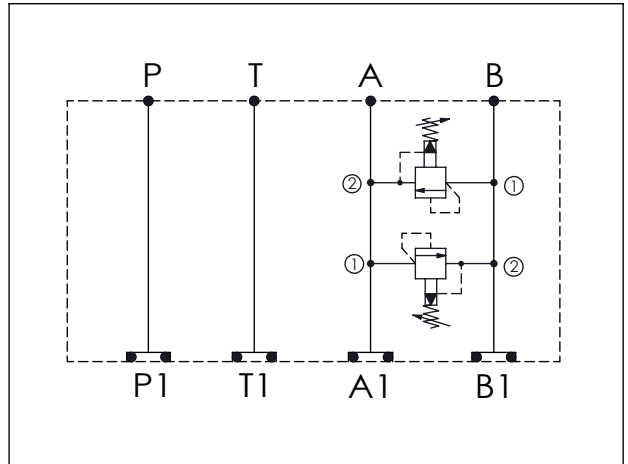


ISO 05 SANDWICH MANIFOLD

Ordering Code: **MH05RDW-X-Y-Z 03**

Stack Height : 62.0mm

UNIT:mm



TECHNICAL DATA

Aluminum Body Pressure Rating: 210 bar

Ductile Iron

Body Pressure Rating: 350 bar

Rated flow: 80 l/min

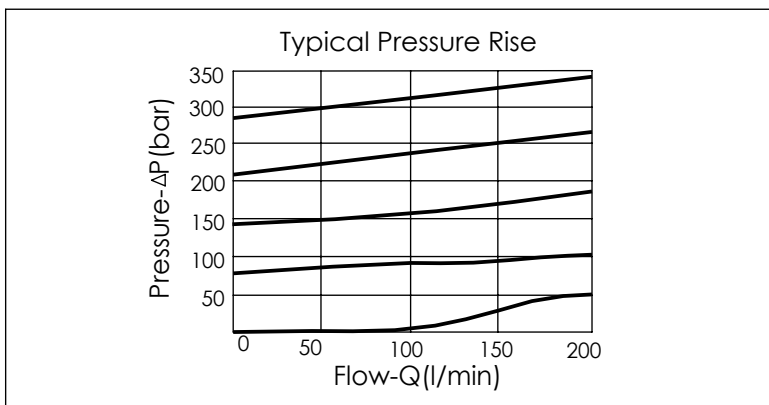
Cartridge Valve:

Refer to RP10A-X-Y-Z

* Refer to Winner Cartridge Valves Catalog.

Aluminum	0.65 kg(WITHOUT VALVES) 0.93 kg(INCLUDE VALVES)
Ductile Iron	1.9 kg(WITHOUT VALVES) 2.18 kg(INCLUDE VALVES)

* If you need the special specification.
Please contact us.



X	SELECTION FOR A PORT CONTROL
10A2	CAVITY ONLY(WITHOUT VALVE)
RP0A	RP10A20AL (95 LPM , 7-210bar)
Please refer to the list price of cartridge program.	

Y	SELECTION FOR B PORT CONTROL
10A2	CAVITY ONLY(WITHOUT VALVE)
RP0A	RP10A20AL (95 LPM , 7-210bar)
Please refer to the list price of cartridge program.	

Z	BODY MATERIAL
A	HIGH-STRENGTH ALUMINUM
S	DUCTILE IRON