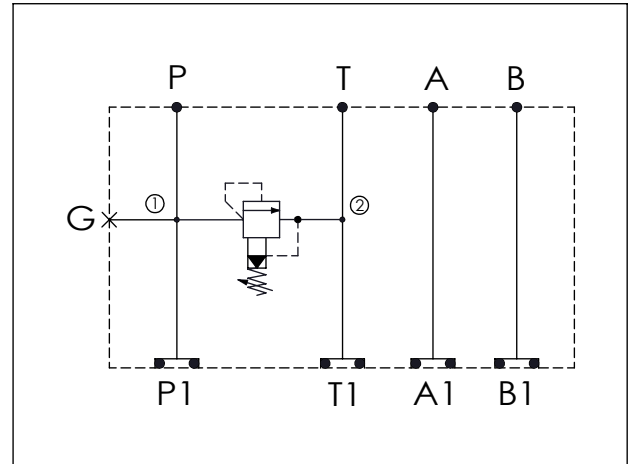


## ISO 05 SANDWICH MANIFOLD

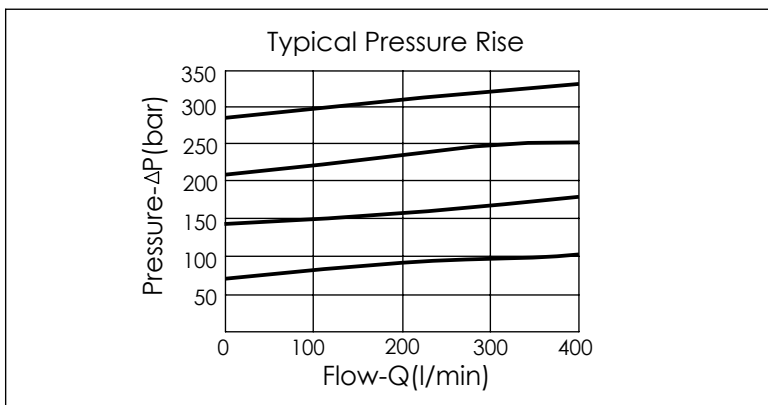
Ordering Code:	<b>MH05RPH-X-Y-Z01</b>
Stack Height :	49.5mm

UNIT:mm



TECHNICAL DATA	
Aluminum Body Pressure Rating:	210 bar
Ductile Iron Body Pressure Rating:	350 bar
Rated flow:	80 l/min
Cartridge Valve:	Refer to RP3A-X-Y-Z
	* Refer to Winner Cartridge Valves Catalog.
Aluminum	0.7 kg (WITHOUT VALVE) 1.0 kg (INCLUDE VALVE)
Ductile Iron	2.0 kg (WITHOUT VALVE) 2.3 kg (INCLUDE VALVE)
* If you need the special specification. Please contact us.	



<b>X</b>	<b>SELECTION FOR P PORT CONTROL</b>
<b>3A2</b>	CAVITY ONLY (WITHOUT VALVE)
<b>RP0A</b>	RP3A20AL (200 LPM , 7-210bar)
Please refer to the list price of cartridge program.	

Y	SELECTION FOR G PORT CONTROL
<b>G02</b>	G 1/4" (Metric)
<b>N02</b>	NPT 1/4" (U.S. Units)

Z	BODY MATERIAL
<b>A</b>	HIGH-STRENGTH ALUMINUM
<b>S</b>	DUCTILE IRON