

ISO 05 SANDWICH MANIFOLD

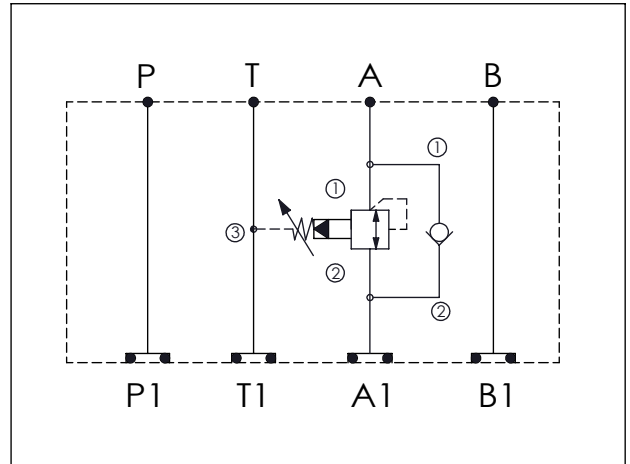
Ordering Code: **MH05SAI-X-Y-Z 03**

Stack Height :63.0mm

Technical drawing showing dimensions and port labels:

- Dimensions: 56.4, 76.2, 43.6, 176.2, 63.0
- Port labels: P, T, A, B, P1, T1, A1, B1
- Dimension: $\phi 7.0^{+0.10}_{0.00}$
- O-RING CODE NO. 4KAA014AA001

UNIT:mm



TECHNICAL DATA

Aluminum Body Pressure Rating: 210 bar
 Ductile Iron Body Pressure Rating: 350 bar

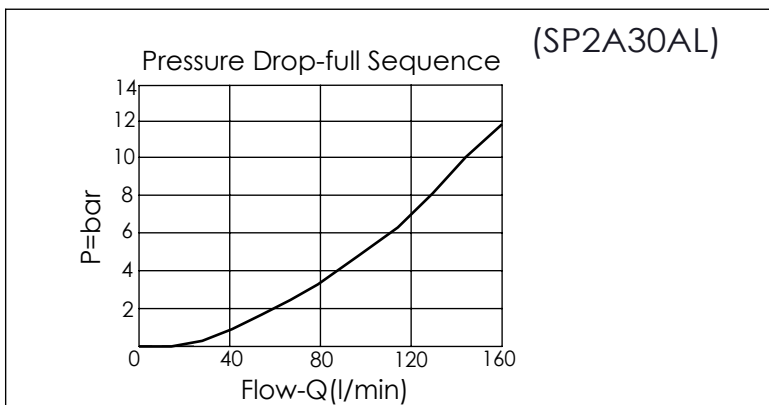
Rated flow: 80 l/min

Cartridge Valve:
 Refer to CV5A-X-Y-Z
 SP2A-X-Y-Z

* Refer to Winner Cartridge Valves Catalog.

Aluminum	0.95 kg(WITHOUT VALVES) 1.45 kg(INCLUDE VALVES)
Ductile Iron	2.64 kg(WITHOUT VALVES) 3.14 kg(INCLUDE VALVES)

* If you need the special specification. Please contact us.



X	SELECTION FOR CHECK VALVE
5A2	CAVITY ONLY(WITHOUT VALVE)
CV2120	CV5A2120N (120LPM , 2.0bar)
Please refer to the list price of cartridge program.	

Y	SELECTION FOR B PORT CONTROL
2A3	CAVITY ONLY(WITHOUT VALVE)
SPOA	SP2A30AL (120LPM , 7-210bar)
Please refer to the list price of cartridge program.	

Z	BODY MATERIAL
A	HIGH-STRENGTH ALUMINUM
S	DUCTILE IRON