

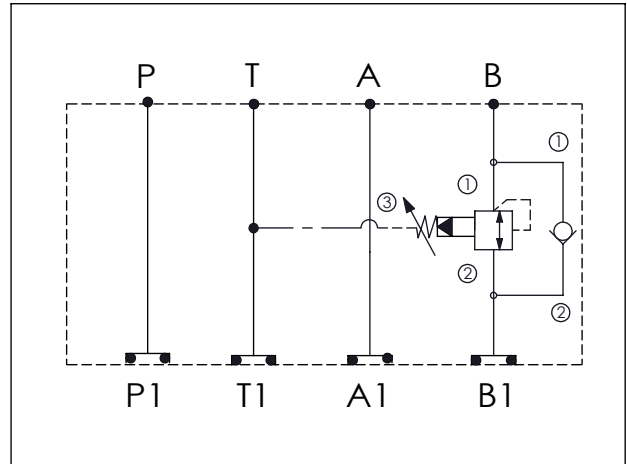
Ordering Code: **MH05SBI-X-Y-Z 03**

Stack Height : 63.0mm

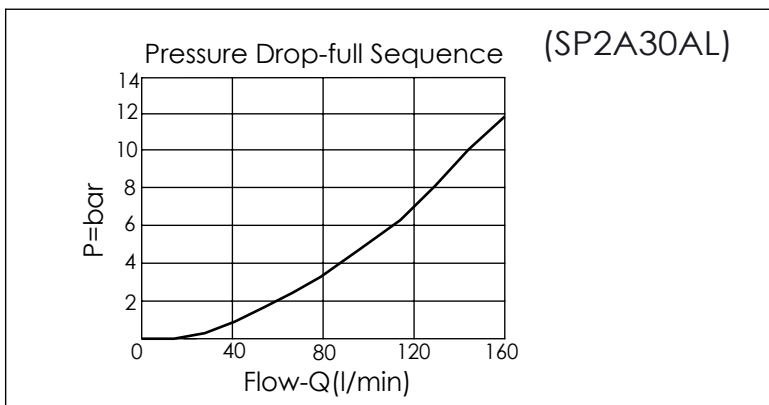
Technical drawing showing dimensions and port locations:

- Overall length: 176.2 mm
- Port P to T distance: 43.6 mm
- Port T to A distance: 76.2 mm
- Port A to B distance: 56.4 mm
- Overall height: 63.0 mm
- Port diameter: $\phi 7.0^{+0.10}_{0.00}$
- Ports labeled: P, T, A, B, P1, T1, A1, B1
- O-RING CODE NO. 4KAA014AA001

UNIT:mm



TECHNICAL DATA	
Aluminum Body Pressure Rating:	210 bar
Ductile Iron Body Pressure Rating:	350 bar
Rated flow:	80 l/min
Cartridge Valve:	Refer to SP2A-X-Y-Z CV5A-X-Y-Z
* Refer to Winner Cartridge Valves Catalog.	
Aluminum	0.95 kg(WITHOUT VALVES) 1.45 kg(INCLUDE VALVES)



* If you need the special specification. Please contact us.

X	SELECTION FOR A PORT CONTROL
2A3	CAVITY ONLY(WITHOUT VALVE)
SP0A	SP2A30AL (120LPM , 7-210bar)
Please refer to the list price of cartridge program.	

Y	SELECTION FOR CHECK VALVE
5A2	CAVITY ONLY(WITHOUT VALVE)
CV2120	CV5A2120N (120LPM , 2.0bar)

Z	BODY MATERIAL
A	HIGH-STRENGTH ALUMINUM

Please refer to the list price of cartridge program.