

## ISO 05 SANDWICH MANIFOLD

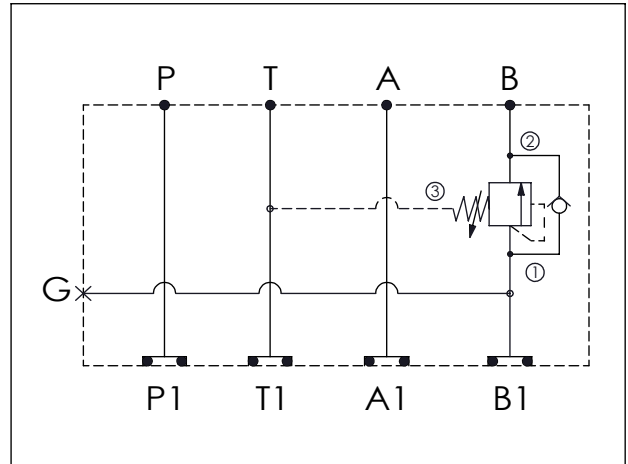
Ordering Code: **MH05SBW-X-Y-Z 03**

Stack Height : 63.0mm

Technical drawing showing dimensions and port labels:

- Top view dimensions: 76.2, 71.7, 152.2
- Side view dimensions: 63.0
- Port labels: P, T, A, B, P1, T1, A1, B1
- Dimension:  $\phi 7.0^{+0.10}_{0.00}$
- O-RING CODE NO. 4KAA014AA001

UNIT:mm



### TECHNICAL DATA

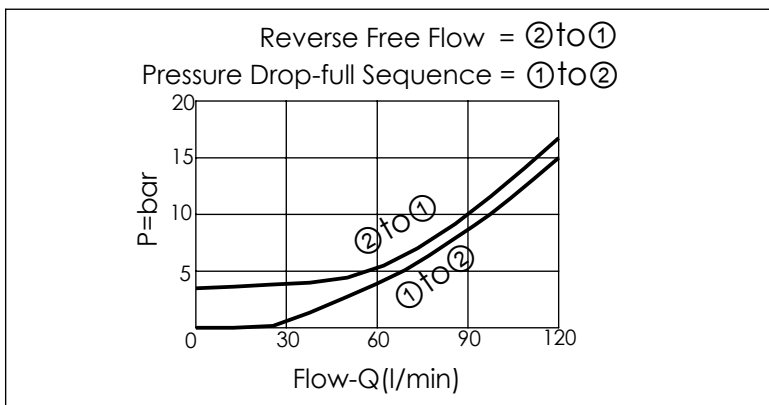
Aluminum Body Pressure Rating: 210 bar  
 Ductile Iron  
 Body Pressure Rating: 350 bar

Rated flow: 80 l/min

Cartridge Valve:  
 Refer to SC2A-X-Y-Z  
 \* Refer to Winner Cartridge Valve Catalog.

Aluminum	0.7 kg(WITHOUT VALVE) 1.1 kg(INCLUDE VALVE)
----------	--

\* If you need the special specification.  
 Please contact us.



X	SELECTION FOR A PORT CONTROL
2A3	CAVITY ONLY(WITHOUT VALVE)
SC0A	SC2A30AL (120LPM , 35-210bar)
Please refer to the list price of cartridge program.	

Y	SELECTION FOR G PORT
G02	G 1/4"(Metric)
N02	NPT 1/4"(U.S. Units)

Z	BODY MATERIAL
A	HIGH-STRENGTH ALUMINUM